

*Denotes item is Mandrel Bent



CONTENTS

<i>Warranty Details</i>	3
<i>Holden/GM 4cyl</i>	4
<i>Holden/GM 6cyl</i>	5
<i>Holden V6</i>	7
<i>Holden V8</i>	10
<i>Holden-Chev V8</i>	19
<i>Chev V8, Camaro, Impala and Truck</i>	23
<i>Ford 4cyl</i>	26
<i>Ford 6cyl</i>	27
<i>Ford V8</i>	29
<i>Chrysler 6cyl</i>	37
<i>Chrysler V8</i>	38
<i>Toyota</i>	39
<i>Nissan</i>	40
<i>BMC/Leyland Mini</i>	41
<i>International</i>	42
<i>Bedford</i>	43
<i>BMW</i>	44
<i>Block Huggers</i>	45
<i>Boat Headers</i>	52
<i>Sprint Car</i>	53
<i>Header Plates & Flanges</i>	55
<i>Collectors</i>	58
<i>Reducer Cones</i>	59
<i>Merg Collectors</i>	59
<i>Engine Mounts</i>	60
<i>V-Band Clamps</i>	64
<i>Mandrel Bends</i>	65
<i>Transmission Cross Members</i>	66
<i>Engine Conversion Kits</i>	68

***All Headers can be viewed on our Website:
www.caepformanceproducts.com.au***

*Denotes item is Mandrel Bent



JET-HOT

Heat Management Ceramic Coating



JET-HOT STERLING highly polished aluminium

JET-HOT Ceramic Black

For Cars, Trucks and Motor Cycles

Available From

CAE Performance Products

www.caepformanceproducts.com.au

*Denotes item is Mandrel Bent



WARRANTY

The manufacturers warranty on Castle Headers products is for a period of two (2) years, covering the Headers ONLY. The warranty is subject to the following conditions

- * All claims must be made within the warranty period.*
- * Any Headers found to have faulty workmanship will be replaced free of charge.*
- * This warranty does not apply to Headers that have been subject to neglect, misuse, use, accidental or intentional damage, unauthorized repairs, modifications, incorrect application or installation.*
- * Castle Headers recommend that this product be fitted by qualified Technician.*
- * The warranty does not cover the cost of freight, installation or removal of Headers.*
- * The warranty only applies to Headers used for normal road use*
- * Warranty is voided by the use of heat wrap*

ORDERING

Orders can be placed by phone, fax or email. We prefer official purchase orders from account customers. Please quote the part number, quantity and any special requirements when ordering.

SHIPPING

All orders are dispatched upon payment (except account customers). We ship Australia-wide everyday. We can do C.O.D using Australia Post (conditions apply). If you wish to use your own courier, please advise us your account details and courier name and we can organise pick-up. All Headers can be packed in a new carton for a small cost. If you choose not to have them packed in a carton, we will not be held liable for damage during shipping.

RETURN OF GOODS

All parts returned will incur a 15% re-stocking fee. Freight is to be paid by customer unless the goods are being returned due to manufacturing defect or shipping error, in which case they are to be shipped using our Australia Post Reply Paid account. C.O.D. post will NOT be accepted under any circumstances. Goods specifically made to customers requests cannot be returned for credit. All goods remain the property of CAE Performance Products until paid for in full.

DAMAGE

All goods are shipped in good condition and are packed accordingly. We can only handle damage claims for prepaid freight.

PAYMENT

Payment can be made by credit card (Visa, Mastercard and Bankcard only), direct deposit, cheque/money order or cash over the counter. Please note that cheques and money orders must include the full amount of the order and freight costs.

*Denotes item is Mandrel Bent



Holden

4 cyl

Gemini TC-TG 1600/1800 Try-Y design						Part No.	CH-01
						Gasket	EMG160
						Jet Hot Code	JH-009
	Prim. Pipe	Sec. Pipe	Outlet	Manual	Auto	Oxy Sensor	
1 5/8"	1 3/4"	2" Slip	Yes	Yes	N/A		

- Suit sedan, wagon and van
- Will fit 1982 Holden Shuttle

Jackaroo & Rodeo 2000/2600 EFI Try-Y design						Part No.	CH-51
						Gasket	EMG160
						Jet Hot Code	JH-009
	Prim. Pipe	Sec. Pipe	Outlet	Manual	Auto	Oxy Sensor	
1 5/8"	1 3/4"	Flanged	Yes	Yes	N/A		

- Fits all model with EGR
- Direct fitment. Bolts up to 2 bolt flange on engine pipe

*Denotes item is Mandrel Bent



Holden

Inline 6 cyl

Holden FX-FJ-FC-FB-FE-EK-EJ-EH-HD-HR							Part No.	CH-04*
							Gasket	HTG-110
							Jet Hot Code	JH-010
Torana LC-LJ-LH-LX	Prim. Pipe	Sec. Pipe	Outlet	Manual	Auto	Oxy Sensor		
Red Motor Try-Y design	1 5/8"	1 3/4"	2-1/4" Slip	Yes	Yes*	N/A		

- Will not suit Hydromatic Auto - Use CH-05
- Bolt holes on inlet manifold may have to be trimmed to clear header plates

Holden HK-HT-HG-HQ-HZ-HJ-HX							Part No.	CH-05*
							Gasket	HTG-011
							Jet Hot Code	JH-010
Red Motor Try-Y design	Prim. Pipe	Sec. Pipe	Outlet	Manual	Auto	Oxy Sensor		
	1 5/8"	1 3/4"	2-1/4" slip	Yes	Yes	N/A		

- Bolt holes on inlet manifold may have to be trimmed to clear header plates

Commodore VB							Part No.	CH-04A
							Gasket	HTG-011
							Jet Hot Code	JH-010
Red Motor Try-Y design	Prim. Pipe	Sec. Pipe	Outlet	Manual	Auto	Oxy Sensor		
	1 5/8"	1 3/4"	2" Slip	Yes	Yes	N/A		

- Bolt holes on inlet manifold may have to be trimmed to clear header plates

Holden HK-HT-HG-HQ-HZ-HJ-HX-WB							Part No.	CH-06*
							Gasket	EMG-169
							Jet Hot Code	JH-010
Blue Motor & Black - 12 Port Head Try-Y design	Prim. Pipe	Sec. Pipe	Outlet	Manual	Auto	Oxy Sensor		
	1 5/8"	1 3/4"	2" Slip	Yes	Yes	N/A		

- Suit ute, van, one-tonner, Sedan & Wagon.

Holden FX-FJ-FC-FB-FE-EK-EJ-EH-HD-HR							Part No.	CH-07A*
							Gasket	EMG-169
							Jet Hot Code	JH-010
Torana LC-LJ-LH-LX	Prim. Pipe	Sec. Pipe	Outlet	Manual	Auto	Oxy Sensor		
Blue Motor & Black 12 Port Head	1 5/8"	1 3/4"	2 1/4" Slip	Yes	Yes	N/A		

*Denotes item is Mandrel Bent



Holden

Inline 6 cyl

Commodore						Part No.	CH-07
VB-VC-VH-VK						Gasket	EMG-169
Blue Motor & Black 12 Port Head						Jet Hot Code	JH-010
Try-Y design							
Prim. Pipe	Sec. Pipe	Outlet	Manual	Auto	Oxy Sensor		
1 5/8"	1 3/4"	2" Slip	Yes	Yes	N/A		

- May have to trim corner off engine mount if fitted with Delco air conditioning

Commodore						Part No.	CH-64
VL						Gasket	EMG-107
RB30						Jet Hot Code	JH-010
Try-Y design							
Prim. Pipe	Sec. Pipe	Outlet	Manual	Auto	Oxy Sensor		
1 5/8"	1 3/4"	2 1/2" Flanged	Yes	Yes	Yes		

- Bolts on to original flange on catalytic converter

*Denotes item is Mandrel Bent



Holden

V6

Commodore						Part No.	CH-49
VN-VP-VR						Gasket	HTG-021
3.8l V6 VN-VP-VR						Jet Hot Code	JH-010
3-into-1 design						Oxy Sensor	JH-015
Prim. Pipe	Sec. Pipe	Outlet	Manual	Auto	Oxy Sensor		
1 5/8"		2" Flanged	Yes	Yes	Yes		

- Includes Y-Piece

Commodore						Part No.	CH-71
VB, VC, VH, VK, VL, VN, VP, VS Sedans, Wagons						Gasket	CAE-048G
3.8l V6 EcoTec						Jet Hot Code	JH-010
3-into-1 design						Oxy Sensor	JH-015
Prim. Pipe	Sec. Pipe	Outlet	Manual	Auto	Oxy Sensor		
1 3/4"	2"	2.5in Flanged		Yes	Yes		

- Will also fit HQ, HX, HJ, WB conversion
- Includes 'Y' piece.
- Manual Transmissions in development please inquire

Commodore						Part No.	CH-71CP
VB-VC-VH-VK							
3.8l V6 and EcoTec							

- Includes: HI-Flow Cat with 2 1/2" Flanged outlet
- Connecting pipe is 2 1/2" mandrel bent with 10mm flanges
- Connects to Redback Exhaust system. Front-M100, Rear-Sedan STR-104, Rear-Wagon STR-109

Commodore						Part No.	CH-79*
VT-VX-VU-VY						Gasket	CAE-048G
3.8l V6 EcoTec						Jet Hot Code	JH-010
3-into-1 design						Oxy Sensor	JH-015
Prim. Pipe	Sec. Pipe	Outlet	Manual	Auto	Oxy Sensor		
1 5/8"	2"	2" Flanged	Yes	Yes	Yes		

- Headers have provision for EGR

Holden						Part No.	CH-69
FC-FE-FB-EK						Gasket	HTG-021
3.8l V6 VN-VP-VR Non-EcoTec						Jet Hot Code	JH-010
Engine Conversion						Oxy Sensor	JH-015
3-into-1 design							
Prim. Pipe	Sec. Pipe	Outlet	Manual	Auto	Oxy Sensor		
1 5/8"	2"	2"	Yes	Yes	Yes		

- Includes Y-Piece with 2 1/2" Outlet
- Must be used with engine mounts CH-EM60
- Will not suit with 'Rear Steer' Rack & Pinion

*Denotes item is Mandrel Bent



Holden

V6

Holden						Part No.	CH-59A
<i>EJ-EH</i>						Gasket	HTG-021
<i>3.8l V6 VN-VP-VR Non-EcoTec</i>						Jet Hot Code	JH-010
Engine Conversion						Oxy Sensor	JH-015
<i>3-into-1 design</i>							
Prim. Pipe	Sec. Pipe	Outlet	Manual	Auto	Oxy Sensor		
1 5/8"	2"	2"	Yes	Yes	Yes		

- Includes Y-Piece with 2 1/2" Outlet
- Must be used with engine mounts CH-EM60
- Will not suit with 'Rear Steer' Rack & Pinion

Holden						Part No.	CH-59
<i>HD-HR</i>						Gasket	HTG-021
<i>3.8l V6 VN-VP-VR Non-EcoTec</i>						Jet Hot Code	JH-010
Engine Conversion						Oxy Sensor	JH-015
<i>3-into-1 design</i>							
Prim. Pipe	Sec. Pipe	Outlet	Manual	Auto	Oxy Sensor		
1 5/8"	2"	2"	Yes	Yes	Yes		

- Includes Y-Piece with 2 1/2" Outlet
- Must be used with engine mounts CH-EM60
- Will not suit with 'Rear Steer' Rack & Pinion

Holden						Part No.	CH-76
<i>HQ-WB & Torana LH-LX-UC</i>						Gasket	HTG-021
<i>3.8l V6 VN-VP-VR Non-EcoTec</i>						Jet Hot Code	JH-010
Engine Conversion						Oxy Sensor	JH-015
<i>3-into-1 design</i>							
Prim. Pipe	Sec. Pipe	Outlet	Manual	Auto	Oxy Sensor		
1 5/8"	2" Flange	2"	Yes	Yes	Yes		

- Includes Y-Piece (will not suit HQ-WB conversion)
- Must be used with engine mounts CH-EM60 or CH-EM34

Torana						Part No.	CH-81
<i>LC-LJ</i>						Gasket	HTG-021
<i>3.8l V6 VN-VP-VR Non-EcoTec</i>						Jet Hot Code	JH-010
Engine Conversion						Oxy Sensor	JH-015
<i>3-into-1 design</i>							
Prim. Pipe	Sec. Pipe	Outlet	Manual	Auto	Oxy Sensor		
1 5/8"	2"	2"	Yes	Yes	Yes		

- Includes Y-Piece with 2 1/2" outlet
- Must be used with engine mounts CH-EM60

*Denotes item is Mandrel Bent



Holden

V6

Gemini						Part No.	CH-74
3.8l V6 VN-VP-VR Non-EcoTec						Gasket	HTG-021
Engine Conversion						Jet Hot Code	JH-010
3-into-1 design						Oxy Sensor	JH-015
Prim. Pipe	Sec. Pipe	Outlet	Manual	Auto	Oxy Sensor		
1 5/8"		2"	Yes	Yes	Yes		

- Includes Y-Piece with 2 1/2" outlet
- Must be used with engine mounts CH-EM64
- Must be used with the original Bosch Starter
- May not fit with Castlemaine Rod Shop sump.

Holden						Part No.	CH-84
EJ-EH						Gasket	CAE-048G
3.8l V6 EcoTec						Jet Hot Code	JH-010
Engine Conversion						Oxy Sensor	JH-015
3-into-1 design							
Prim. Pipe	Sec. Pipe	Outlet	Manual	Auto	Oxy Sensor		
1 5/8"	2"	2"	Yes	Yes	Yes		

- Includes Y-Piece with 2 1/2" outlet - Specify if Manual or Auto
- Must be used with engine mounts CH-EM60P/M & Front Steer Rack & Pinion
- Will fit Toyota Hilux 2WD from 1987 to late 1990's
- Will fit FC-FB-EK if LHS pipe is dented 5mm to clear sub-frame
- Y-Piece will not clear VT-VY-VX Auto
- Will not suit with 'Rear Steer' Rack & Pinion

Gemini						Part No.	CH-86
3.8l V6 EcoTec						Gasket	CAE-048G
Engine Conversion						Jet Hot Code	JH-010
3-into-1 design						Oxy Sensor	JH-015
Prim. Pipe	Sec. Pipe	Outlet	Manual	Auto	Oxy Sensor		
1 5/8"		2" Flanged	Yes	Yes	Yes		

- Includes Y-Piece with 2 1/2" outlet

*Denotes item is Mandrel Bent



Holden

V8

Holden						Part No.	CH-08*
HQ-HJ-HZ-HX-WB						Gasket	HTG-013
253-308 V8						Jet Hot Code	JH-003
Try-Y design							
Prim. Pipe	Sec. Pipe	Outlet	Manual	Auto	Oxy Sensor		
1 5/8"	1 3/4"	2 1/4"	Yes	Yes	N/A		

Note: Will not fit with Ram assisted Power Steering

- Suits Cable Clutch Setup

Holden						Part No.	CH-89*
HQ-HJ-HZ-HX-WB						Gasket	HTG-013
253-308 V8						Jet Hot Code	JH-003
4-into-1 design							
Prim. Pipe	Sec. Pipe	Outlet	Manual	Auto	Oxy Sensor		
1 5/8"		3" Flanged	No	Yes	N/A		

- Will fit with Auto Trans T-350, 400, 700R, P/Glide/TRI-Matic & All Australian 4 Speed Manual - Will Not Suit WB Cable Clutch Setup

Holden						Part No.	CH-89A*
HQ-HJ-HZ-HX-WB						Gasket	HTG-013
Same as CH-89 except 1 3/4" primaries						Jet Hot Code	JH-003
Torana						Part No.	CH-10
LH-LX-UC						Gasket	HTG-013
253-308 V8						Jet Hot Code	JH-003
Try-Y design							
Prim. Pipe	Sec. Pipe	Outlet	Manual	Auto	Oxy Sensor		
1 5/8"	1 3/4"	2" Slip	Yes	Yes	N/A		

- Will fit with T-350, T-400, Trimatic and Aussie 4 speed transmissions and P/Glide

Torana						Part No.	CH-10 4-1*
LH-LX-UC						Gasket	HTG-013
253-308 V8						Jet Hot Code	JH-003
4-into-1 design							
Prim. Pipe	Sec. Pipe	Outlet	Manual	Auto	Oxy Sensor		
1 5/8"		2-1/2" Flanged	Yes	Yes	N/A		

- Will fit with hydraulic clutch
- Will fit with Muncie, Toploader, T-350, T-400, Trimatic & P/Glide transmissions
- Will not fit with All Australian 4 Speed and the OEM Clutch setup
- Must use with Original Bosch Starter Motor
- Will fit Hi-Energy and most other Winged Sumps
- Note: Swaybar will require spacing in order to clear headers

*Denotes item is Mandrel Bent



Holden Torana

V8

Torana LC-LJ 253-308 V8 Engine Conversion Try-Y design						Part No.	CH-61*
						Gasket	HTG-013
						Jet Hot Code	JH-003
	Prim. Pipe	Sec. Pipe	Outlet	Manual	Auto	Oxy Sensor	
1 5/8"	1 3/4"	2"	Yes	Yes	N/A		

- Will not suit Aussie 4 speed with hydraulic clutch on drivers side
- Must be used with HQ style V8 engine mounts part no. CH-EM89
- Suits Rodeo K29 - 1988

Commodore VB-VC-VH-VK 253-308 V8 Try-Y design						Part No.	CH-09
						Gasket	HTG-013
						Jet Hot Code	JH-003
	Prim. Pipe	Sec. Pipe	Outlet	Manual	Auto	Oxy Sensor	
1 5/8"	1 3/4"	2"	Yes	Yes	N/A		

- Suit power and non-power steering

Holden HQ-HJ-HZ-HX-WB & HK-HT-HG 5ltr EFI V8 Engine Conversion Try-Y design						Part No.	CH-44*
						Gasket	HTG-513
						Jet Hot Code	JH-003
	Prim. Pipe	Sec. Pipe	Outlet	Manual	Auto	Oxy Sensor	
1 5/8"	1 3/4"	2 1/4"	Yes*	Yes*	Yes		

- Please specify what year engine. VS-VT engine needs 2 oxy bungs

Will fit with: High Energy Sump

Turbo 350, 400 and 700 Transmissions

4L60E, Holden Tri-Matic & Powerglide Transmissions

Commodore VN-VS T5 5-speed Transmissions

Toyota Supra 5 speed trans with Rod Shop bellhousing

Must be used with V8 engine mounts Part No CH-EM89

and Rubbers to suit i.e. A1135 for HK-HT-HG & A1157A for HQ-WB

- Will fit with all Bosch Starter Motors & most Gear Reduction Starter Motors

Holden HQ-HJ-HZ-HX-WB 5ltr EFI V8 Engine Conversion Try-Y design. Big primaries						Part No.	CH-44A*
						Gasket	HTG-513
						Jet Hot Code	JH-003
	Prim. Pipe	Sec. Pipe	Outlet	Manual	Auto	Oxy Sensor	
1 3/4"	1 7/8"	2 1/2" Flanged	Yes	Yes	Yes		

- Same design as CH-44. See above for fitting details
- Ideal for stroker & supercharged engines

*Denotes item is Mandrel Bent



Holden

V8

Holden HK-HT-HG 5ltr EFI V8	Part No.	CH-114
	Gasket	HTG-513
	Jet Hot Code	JH-003

Prim. Pipe	Sec. Pipe	Outlet	Manual	Auto	Oxy Sensor
1 3/4"		3" Flanged	Yes	Yes	Yes

Engine Conversion

4-1 Design

Will fit with Bosch &

- Gear Reduction Starters
- Suits Auto Trans T-350/T400/T700 4L606/Trimatic & Powerglide
- Must be used with V8 Engine Mounts P/N CH-EM 89 & A1135 Rubbers
- Will not suit Power Steering

Torana LH-LX-UC 5ltr EFI V8	Part No.	CH-56*
	Gasket	HTG-513
	Jet Hot Code	JH-003

Prim. Pipe	Sec. Pipe	Outlet	Manual	Auto	Oxy Sensor
1 3/4"	2" on req* 1 7/8"	2 Bolt 2 1/2 "	Yes*	Yes*	Yes LHS

Engine Conversion

Try-Y design.

- Must use HQ Engine Mounts Part No CH-EM89 or CH-EM89P/M
- Please specify what year engine. VS-VT engine needs 2 oxy bungs
- Ideal for stroker & supercharged engines

Will fit with:

- High Energy Sump
- Turbo 350, 400 and 700 Transmissions
- 4L60E, Holden Tri-Matic & Powerglide Transmissions
- Commodore VN-VS T5 5-speed Transmissions
- Toyota Supra 5 speed trans with Rod Shop bellhousing
- CAE-Performance Products transmission x-members

- Will not fit with early Bosch starter motor

Torana LH-LX-UC 5ltr EFI V8	Part No.	CH-56A*
	Gasket	HTG-013
	Jet Hot Code	JH-003

- Same Specs As CH-56 Except 4 Into 1 Design
- 1 3/4" primaries 3" collector
- Will not fit with Bosch style starter motor Use G/R-03/1.9 or equivalent
- Note: Swaybar will require spacing down in order to clear primary pipes
- Note: Transmission Lugs May Require Trimming On Some Applications

Torana LC-LJ 5ltr EFI V8	Part No.	CH-62*
	Gasket	HTG-513
	Jet Hot Code	JH-003

Engine Conversion

Try-Y design.

Prim. Pipe	Sec. Pipe	Outlet	Manual	Auto	Oxy Sensor
1 5/8"	1 3/4"	2 1/4" Flanged	Yes	Yes	Yes LHS

- Please specify what year engine. VS-VT engine needs 2 oxy bungs
 - Must be used with HQ V8 style engine mounts P/N CH-EM89
 - Steering Column will need to be shifted with Re-Locate Plate Pt.No. STC Plate-1
 - Will not fit with Mechanical Clutch and Aussie 4 Speed
- NOTE: Transmission Lugs may require trimming on some applications

*Denotes item is Mandrel Bent



Holden

V8

Commodore VB-VC-VH-VK 5ltr EFI V8 Engine Conversion Try-Y design.						Part No.	CH-58*
						Gasket	HTG-513
						Jet Hot Code	JH-003
	Prim. Pipe	Sec. Pipe	Outlet	Manual	Auto	Oxy Sensor	
1 3/4"	1 7/8"	2 1/4"	Yes	Yes	Yes LHS		

- Please specify what year engine. VS-VT engine needs 2 oxy bungs
- Must be used with original VB-VS engine mounts.

Will fit with: High Energy Sump
 Turbo 350, 400 and 700 Transmissions
 4L60E, Holden Tri-Matic & Powerglide Transmissions
 Commodore VN-VS T5 5-speed Transmissions
 Toyota Supra 5 speed trans with Rod Shop bellhousing
 Commodore Getrag Transmission

Will not fit with early Bosch starter motor

Commodore VL-VN-VP-VR-VS 5ltr EFI V8 Try-Y design.						Part No.	CH-91*
						Gasket	HTG-513
						Jet Hot Code	JH-003
	Prim. Pipe	Sec. Pipe	Outlet	Manual	Auto	Oxy Sensor	
1 3/4"	1 7/8"	2 1/4"	Yes	Yes	Yes		

- Y-Piece available. Part CH-91Y
- Note: If using with VL R & P Drivers side Headers must be dented on 1 & 3 Collector to clear power steering return line.
- Will fit with Hi-Energy Sump

Note: If vehicle is fitted with knock sensor it will have to be changes to passengers side.

Commodore VT-VX-VU-VY-VZ GENIII 5.7ltr & LS2 6ltr V8 Try-Y design.						Part No.	CH-73*
						Gasket	HTG-548
						Jet Hot Code	JH-003
	Prim. Pipe	Sec. Pipe	Outlet	Manual	Auto	Oxy Sensor	
1-3/4"	1 7/8"	2 1/2" Flanged	Yes	Yes	Yes		

- VY-VZ application must use oxy sensor extension loom part no. LOOM-O/S-1 and LOOM-O/S-2
- Will not suit Adventurer

Commodore VT-VX-VU-VY-VZ GENIII 5.7ltr & LS2 6ltr V8 Connecting Pipe						Part No.	CH-73CP*
						Gasket	HTG-548
						Jet Hot Code	JH-003
	Prim. Pipe	Sec. Pipe	Outlet	Manual	Auto	Oxy Sensor	
2 1/2"		2 1/2"	Yes	Yes	Yes		

- Used for connecting CH-73 headers to 2 1/2" twin system. Includes 2 x hi-flow Cat converters
- To be used with Redback or factory system

*Denotes item is Mandrel Bent



Holden

V8

Commodore VT-VX-VU-VY-VZ GENIII 5.7ltr & LS2 6ltr V8 & LS-3 4-into-1 design						Part No.	CH-94*
						Gasket	HTG-548
						Jet Hot Code	JH-003
Prim. Pipe	Sec. Pipe	Outlet	Manual	Auto	Oxy Sensor		
1 3/4"		3" Flanged	Yes	Yes	Yes		

• VY-VZ application must use oxy sensor extension loom part no. LOOM-O/S-1 and LOOM-O/S-2

Commodore VT-VX-VU-VY-VZ GENIII 5.7ltr & LS2 6ltr V8 & LS-3 4-into-1 design						Part No.	CH-94A*
						Gasket	HTG-548
						Jet Hot Code	JH-003
Prim. Pipe	Sec. Pipe	Outlet	Manual	Auto	Oxy Sensor		
1 7/8 "		3" Flanged	Yes	Yes	Yes		

• VY-VZ application must use oxy sensor extension loom part no. LOOM-O/S-1 and LOOM-O/S-2

Commodore VT-VX-VU-VY-VZ GENIII 5.7ltr & LS2 6ltr V8 & LS-3 and LS-3 4-into-1 design						Part No.	CH-94B*
						Gasket	HTG-548
						Jet Hot Code	JH-003
Prim. Pipe	Sec. Pipe	Outlet	Manual	Auto	Oxy Sensor		
2"		3" or 3 1/2" Flanged	Yes	Yes	Yes		

• VY-VZ application must use oxy sensor extension loom part no. LOOM-O/S-1 and LOOM-O/S-2

Commodore VT-VX-VU-VY-VZ GENIII 5.7ltr & LS2 6ltr V8 Connecting Pipe						Part No.	CH-94CP*
						Prim. Pipe	Sec. Pipe
2 1/2"		2 1/2"	Yes	Yes	N/A		

• Used for connecting CH-94 headers to 2 1/2" twin system. Includes 2 x hi-flow Cat converters

• Must be used with Redback part no's STR130 & STR132

Commodore VE ONLY LS2 6ltr V8 4-into-1 design						Part No.	CH-100*
						Gasket	HTG-548
						Jet Hot Code	JH-003
Prim. Pipe	Sec. Pipe	Outlet	Manual	Auto	Oxy Sensor		
1 3/4"		3" Flanged	Yes	Yes	Yes		

• Must be used with Euro 3 compliance cat converters

*Denotes item is Mandrel Bent



Holden

V8

Commodore						Part No.	CH-100A*
VE ONLY						Gasket	HTG-548
LS2 6ltr V8						Jet Hot Code	JH-003
4-into-1 design							
Prim. Pipe	Sec. Pipe	Outlet	Manual	Auto	Oxy Sensor		
1 7/8"		3" Flanged	Yes	Yes	Yes		

- Must be used with Euro 3 compliance cat converters

Commodore						Part No.	CH-100CP*
VE ONLY							
LS2 6ltr V8							
Connecting Pipe							
Prim. Pipe	Sec. Pipe	Outlet	Manual	Auto	Oxy Sensor		
1 7/8"		2 1/2"	Yes	Yes	Yes		

- Used for connecting CH-100 headers to 2 1/2" twin system. Includes 2 x hi-flow Cat converters
- Must be used with Castle Headers rear section (CH-100M/SED or CH-100M/UTE) or Factory System.

Holden						Part No.	CH-87*
HK-HT-HG						Gasket	HTG-548
GENIII 5.7lt,						Jet Hot Code	JH-003
LS-2 6ltr, LS-3 6.2ltr & LSA							
Engine Conversion							
4-into-1 design							
Prim. Pipe	Sec. Pipe	Outlet	Manual	Auto	Oxy Sensor		
1 3/4"		3" Flanged	Yes	Yes	Yes		

Suits Rack & Power steering

- May not suit after market Front Ends e.g. like Rod Tech
- Will fit Mc Donald Bros Front End
- Must be used with engine mounts CH-EM69

• Suit Rack & Pinion steering. Available in 2" prim. with 3 1/2" collector	CH-87A
• Suit Rack & Pinion steering. Available in 1 7/8" prim. with 3"-3 1/2" collector	CH-87B
• Will fit Factory Steering Box with 1 3/4" primaries 3" Collector	CH-87C
• Will fit Factory Steering Box with 1 7/8" primaries 3" or 3.5" Collector	CH-87D

Holden						Part No.	CH-78*
HQ-HJ-HZ-HX-WB						Gasket	HTG-548
GENIII 5.7ltr &						Jet Hot Code	JH-003
LS2 6ltr V8 & LS3							
Engine Conversion							
Try-Y design							
Prim. Pipe	Sec. Pipe	Outlet	Manual	Auto	Oxy Sensor		
1 3/4"	1 7/8"	2 1/2" Flanged	Yes	Yes	Yes		

- Must be used with engine mounts CH-EM69
- Will also fit Chev Impala 1965-70- if drivers side primaries are modified.

*Denotes item is Mandrel Bent



Holden

V8

Holden HQ-HJ-HZ-HX-WB GENIII 5.7ltr & LS2 6ltr V8 & LS3 Engine Conversion 4-into-1 design						Part No.	CH-95*
						Gasket	HTG-548
						Jet Hot Code	JH-003
Prim. Pipe	Sec. Pipe	Outlet	Manual	Auto	Oxy Sensor		
1 3/4"		3" Flanged	Yes	Yes*	Yes		

- Must be used with engine mounts CH-EM69
- Will also suit T400 - T350 and Powerglide transmission
- Must use Oxy Sensors Extensions P/N Loom O/S-1.
- Will also fit with Blacks Rack & Pinion Steering.
- LS2 & LS3 Engines use Loom o/s-2
- Requires Trans X-Member to suit your Transmission

Holden HQ-HJ-HZ-HX-WB GENIII 5.7ltr & LS2 6ltr V8 & LS3 Engine Conversion 4-into-1. Big primaries						Part No.	CH-95A*
						Gasket	HTG-548
						Jet Hot Code	JH-003
Prim. Pipe	Sec. Pipe	Outlet	Manual	Auto	Oxy Sensor		
1 7/8"		3 1/2" Flanged	Yes	Yes*	Yes		

- Must be used with engine mounts CH-EM69
- Will also suit T400 - T350 and Powerglide transmission
- Ideal for supercharged engines
- Must use Oxy Sensors Extensions P/N Loom O/S-1.
- Will also fit with Blacks Rack & Pinion Steering.
- LS2 & LS3 Engines use Loom o/s-2
- Requires Trans X-Member to suit your Transmission

Torana LH-LX-UC GENIII 5.7ltr & LS2 6ltr V8 & LS3 Engine Conversion Try-Y design						Part No.	CH-77*
						Gasket	HTG-548
						Jet Hot Code	JH-003
Prim. Pipe	Sec. Pipe	Outlet	Manual	Auto	Oxy Sensor		
1 3/4"	2"	2 1/2" Flanged	Yes	Yes	Yes		

- Must be used with engine mounts CH-EM70
- Will fit with factory LS small starter or HI-TORQUE G/R-01/LS-CONVERSION
- Will not fit with Castlemaine Rod Shop Engine Mount Conversion Kit.
- NOTE: Will Not Fit Some LS3 Engines Due To Primaries Fouling On Knock Sensors

*Denotes item is Mandrel Bent



Holden

V8

Torana LH-LX-UC GENIII 5.7ltr & LS2 6ltr V8 & LS3 Engine Conversion 4-into-1 design						Part No.	CH-77A*
						Gasket	HTG-548
						Jet Hot Code	JH-003
	Prim. Pipe	Sec. Pipe	Outlet	Manual	Auto	Oxy Sensor	
1 3/4"	n/a	3" Flanged	Yes	Yes	Yes		

- Must be used with engine mounts CH-EM70
- Will fit with HI-TORQUE G/R-01/LS-CONVERSION
- Will not fit with Castlemaine Rod Shop Engine Mount Conversion Kit
- Swaybar will need to be spaced down to clear primary pipes

Torana LG-LJ GENIII 5.7ltr & LS2 6ltr V8 & LS3 Engine Conversion Try-Y design						Part No.	CH-93
						Gasket	HTG-548
						Jet Hot Code	JH-003
	Prim. Pipe	Sec. Pipe	Outlet	Manual	Auto	Oxy Sensor	
1 3/4"	1 7/8"	2 1/2" Flanged	Yes	Yes	Yes		

- Must be used with engine mounts CH-EM70
- Must be used with gear reduction starter G/R-01/LS-CONVERSION

Commodore VB-VC-VH-VK-VL-VN-VP-VR-VS GENIII 5.7ltr & LS2 6ltr V8 & LS3 Engine Conversion Try-Y design						Part No.	CH-80*
						Gasket	HTG-548
						Jet Hot Code	JH-003
	Prim. Pipe	Sec. Pipe	Outlet	Manual	Auto	Oxy Sensor	
1 3/4"	2 "	2 1/2" Flanged	Yes	Yes	Yes		

Read Note 1 on Page 18

- Must be used with Engine Mountings Part No CH-EM80A or CH-EM80P/M
- Will fit with power and non-power steering including Variable Ration Power steering in VN-VP-VR
- Must be used with L.H.Side Starter Motor Conversion.

Commodore VB-VC-VH-VK-VL-VN-VP-VR-VS GENIII 5.7ltr & LS2 6ltr V8 Engine Conversion 4-into-1 design						Part No.	CH-80A*
						Gasket	HTG-548
						Jet Hot Code	JH-003
	Prim. Pipe	Sec. Pipe	Outlet	Manual	Auto	Oxy Sensor	
1 7/8"		2 Bolt 3"	Yes	Yes	Yes		

Read Note 1 on Page 18

- Must be used with Engine Mountings Part No CH-EM80A or CH-EM80P/M
- Will fit with power and non-power steering including Variable Ration Power steering in VN-VP-VR-VS
- Must be used with L.H.Side Starter Motor Conversion kit.

*Denotes item is Mandrel Bent



Holden

V8

Commodore VB-VC-VH-VK-VL-VN-VP-VR-VS GENIII 5.7ltr & LS2 6ltr V8 Engine Conversion 4-into-1 design						Part No.	CH-80B*
						Gasket	HTG-548
						Jet Hot Code	JH-003
Prim. Pipe	Sec. Pipe	Outlet	Manual	Auto	Oxy Sensor		
1 3/4"		3" Flanged	Yes	Yes	Yes		

Read Note 1 on Page 18

- Must be used with Engine Mountings Part No CH-EM80A Or CH-EM80P/M
- Will fit with power and non-power steering including Variable Ration Power steering in VN-VP-VR
- Must be used with L.H.Side Starter Motor Conversion kit.

Holden HQ-HJ-HZ-HX-WB 5.0 Ltr EFI V8 Engine Conversion 4-1 Tuned Length Design						Part No.	CH-97*
						Gasket	HTG-513
						Jet Hot Code	JH-003
Prim. Pipe	Sec. Pipe	Outlet	Manual	Auto	Oxy Sensor		
1-3/4"		3 " Flanged	Yes	Yes	Yes		

- Please Specify what year Engine as VS-VT Engine needs two (2) Oxy Bungs
- Must use with HQ Style V8 Engine mounts Part No CH-EM89
- Will fit with Bosch Starter Motors & most Gear Reduction Starter Motors
 BXH - 136 or G/R-03/1.9 Hi-Torque.
- Will fit with - HI-Energy Sump, T-350, 400and 700 Transmissions. 4L60, Trimatic, Powerglide & Getrag Transmissions. Commodore VN-VS T5-5speed
 Toyota Supra 5 Speed Trans with Rod Shop Bell housing.

Holden HQ-HJ-HZ-HX-WB 5.0 Ltr EFI V8 Engine Conversion 4-1 Tuned Length Design						Part No.	CH-97A*
						Gasket	HTG-513
						Jet Hot Code	JH-003
Prim. Pipe	Sec. Pipe	Outlet	Manual	Auto	Oxy Sensor		
1 7/8 "		3 1/2 " Flanged	Yes	Yes	Yes		

Same as CH-97, but with 1 7/8 " Primaries.

NOTE 1:
For easier fitment and better clearances on Power Rack and Pinion Steering we Highly Recommend to fit VN-VS Commodore K-Frame and all Steering Components.

This will give you better clearance around the Rack and Pinion, Body and Steering Shaft.

*Denotes item is Mandrel Bent



Holden - Chev

V8

Holden HK-HT-HG Small Block Chev Try-Y design.						Part No.	CH-60*
						Gasket	HTG-548
						Jet Hot Code	JH-003
	Prim. Pipe	Sec. Pipe	Outlet	Manual	Auto	Oxy Sensor	
Suits Original Steering	1 5/8"	1 3/4"	2 1/4"	Yes	Yes	N/A	
Will fit with CAE	<ul style="list-style-type: none"> • If using with T400 trans, suggest using XB Falcon or CAE cross member 						
Front Power Steering	<ul style="list-style-type: none"> • Will Fit with CAE Power Steering R&P • Must use with engine mounts CH-EM31 • Will fit with Straight and Angle Plug Heads. • Column Shift 						

Holden HK-HT-HG Small Block Chev 4-into-1 design.						Part No.	CH-116*
						Gasket	HTG-548
						Jet Hot Code	JH-003
	Prim. Pipe	Sec. Pipe	Outlet	Manual	Auto	Oxy Sensor	
Suits Original Steering	1 3/4"		3" Flanged	Yes	Yes	N/A	
	<ul style="list-style-type: none"> • Suits Original Steering • Suits Factory Heater Box • Will fit with Straight and Angle Plug Heads. • Will fit with T350, T400, Muncie, Toploader, Saginaw Man (with LHS Slave Cyl only) and Powerglide 						

Same as CH-116 but has 1-7/8" Primaries 3 1/2" Collector reduced to 3" with 3 Bolt Flange.	CH-116A*
<ul style="list-style-type: none"> • Will not suit aftermarket starter motors. • Recommend To Use CAE Trans X/Member • Will fit with CAE front Power Steering Rack & Pinion 	

Holden HQ-HJ-HX-HZ-WB Small Block Chev Engine Conversion Try-Y design.						Part No.	CH-11*
						Gasket	HTG-548
						Jet Hot Code	JH-003
	Prim. Pipe	Sec. Pipe	Outlet	Manual	Auto	Oxy Sensor	
	1 5/8"	1 3/4"	2"	Yes	Yes	N/A	
	<ul style="list-style-type: none"> • Will fit with Straight and Angle Plug Heads. • Will not fit with Harrison A/C 						

*Denotes item is Mandrel Bent



Holden - Chev

V8

Holden HQ-HJ-HX-HZ-WB Small Block Chev Engine Conversion 4-into-1 design						Part No.	CH-28*
						Gasket	HTG-548
						Jet Hot Code	JH-003
Prim. Pipe	Sec. Pipe	Outlet	Manual	Auto	Oxy Sensor		
1 3/4 "		3" Flanged	Yes	Yes	N/A		

- Will fit with Straight and Angle Plug Heads.
- Will fit with T350, T400, Muncie, Toploader, Powerglide and T56 Tremec Manual Transmissions
- Must be fitted with factory HQ-WB Engine Mounts, CH-EM02 or CHEM02P/M
- Will not fit harrison A/C - Will not fit with all Aust. 4 Speed with Mechanical Clutch

Same as CH-28 but has 1-7/8 " Primaries, 3-1/2 " Collector & 3 Bolt Flange	Part No.	CH-28A*
Same as CH-28A - Suits Brodix Heads	Part No.	CH-28A-BRODIX*
Same As CH-28A But Has 2" Prim, 3-1/2" Coll. & 3 Bolt Flange	Part No.	CH-28B*
Same as CH-28B - Suits Brodix Heads	Part No.	CH-28B-BRODIX*

Holden Torana - Chev

V8

Torana LH-LX-UC Small Block Chev Engine Conversion Try-Y design						Part No.	CH-12*
						Gasket	HTG-548
						Jet Hot Code	JH-003
Prim. Pipe	Sec. Pipe	Outlet	Manual	Auto	Oxy Sensor		
1 3/4 "	1 7/8 "	2 1/2 " Flanged	Yes	Yes	N/A		

- Will fit with Straight and Angle Plug Heads - Recommended to use Hydraulic Thrust
- Must be used with HQ Chev engine mounts CH-EM02 or CH-EM02P/M
- Suits Auto Trans T-400, T-350, Powerglide & most Manual Transmissions
- Must be used with Gear reduction starter motor G/R-01/1.9
- **Note:** Wings on bellhousing require trimming - Will fit with Tremec 5 speed if bell housing is trimmed.
- Suits HI Energy Sump - Swaybar Requires To Be Lowered

Torana & Camaro R.H.D LG-LJ & 1967-78 Camaro Small Block Chev Engine Conversion Try-Y design						Part No.	CH-31*
						Gasket	HTG-548
						Jet Hot Code	JH-003
Prim. Pipe	Sec. Pipe	Outlet	Manual	Auto	Oxy Sensor		
1 5/8"	1 3/4"	2 1/4"	Yes	Yes	N/A		

- Must be used with HK-HT-HG engine mounts CH-EM31 or CH-EM31P/M
- Will fit with Straight and Angle Plug Heads.
- Must be used with Gear Reduction starter motor G/R-01/1.9
- Steering column must be moved 22mm towards drivers side - use STC Plate-1
- Also suits 1967-78 Camaro with factory Chev Steering Box R.H.D. only

*Denotes item is Mandrel Bent



Holden - Chev

V8

Holden HK-HT-HG Big Block Chev Engine Conversion 4-into-1 design						Part No.	CH-57*
						Gasket	CAE-011G
						Jet Hot Code	JH-003
	Prim. Pipe	Sec. Pipe	Outlet	Manual	Auto	Oxy Sensor	
2"		3 1/2" Flanged	Yes	Yes	N/A		

- Must be used with engine mounts CH-EM31 or CH-EM31P/M
- Recommend to use with Gear Reduction starter motor
- Only suits Original Steering Box
- Will fit with Factory Heater Box
- Will not fit with Tall Deck Engines or Aftermarket Heads with different - spark plug angle than original.

Holden HQ-HJ-HX-HZ-WB Big Block Chev Engine Conversion 4-into-1 design						Part No.	CH-14*
						Gasket	CAE-011G
						Jet Hot Code	JH-003
	Prim. Pipe	Sec. Pipe	Outlet	Manual	Auto	Oxy Sensor	
2"		3 1/2" Flanged	Yes	Yes	N/A		

- Will not suit Patriot Heads Part No 2214
- Must be used with factory HQ-WB Chev engine mounts, CH-EM02 or CH-EM02P/M
- Can be used with factory starter or gear reduction unit
- Due to variations in transmission combinations, transmission may have to be spaced for correct fitment of headers. Will fit with High-Energy Sump.
- Suggest using CAE transmission X-member
- Use with Oil Filter Ryco Z40 or GEN 5 and 6 Block best suit K&N PS-2002 Short Filter

Holden HQ-HJ-HX-HZ-WB Big Block Chev Tall Deck 572 Eng 4-into-1 design All Specs same as CH-14						Part No.	CH-14A*
						Gasket	CAE-011G
						Jet Hot Code	JH-003
	Prim. Pipe	Sec. Pipe	Outlet	Manual	Auto	Oxy Sensor	
2"		3 1/2" Flanged	Yes	Yes	N/A		

*Denotes item is Mandrel Bent



Chevrolet

V8

Chev 1955-56-57 Small Block 4-into-1 design						Part No.	CH-36*
						Gasket	HTG-548
						Jet Hot Code	JH-003
	Prim. Pipe	Sec. Pipe	Outlet	Manual	Auto	Oxy Sensor	
1 5/8"		3" Flanged	Yes	Yes	N/A		

- Will fit angle and straight plug heads
- Will fit with standard steering and most power steering boxes including 605 Saginaw Box
- Will fit with original cradle engine mounts
- Must be use with engine mounts CH-EM36-S/B
- Will not suit R & P Steering.
- Designed to suit Left Hand and Right Hand Drive vehicles
- Will not fit with original Trans Side Mounts unless modified

Chev 1955-56-57 Small Block 4-into-1 design						Part No.	CH-36B*
						Gasket	HTG-548
						Jet Hot Code	JH-003
	Prim. Pipe	Sec. Pipe	Outlet	Manual	Auto	Oxy Sensor	
1 3/4"		3" Flanged	Yes	Yes	N/A		

- Same design as CH-36 but with big primaries. See above for fitting details
- Must be use with engine mounts CH-EM36-S/B
- Designed to suit Left Hand and Right Hand Drive vehicles
- Will not fit with factory transmission mounts or 2 speed cast iron trans
- Will fit Angle and Straight Plug Heads

Chev 1955-56-57 Small Block 4-into-1 design						Part No.	CH-36A*
						Gasket	HTG-548
						Jet Hot Code	JH-003
	Prim. Pipe	Sec. Pipe	Outlet	Manual	Auto	Oxy Sensor	
1 5/8"		3" Flanged	Yes	Yes	N/A		

- Designed to suit AOD, and Flamin River Rack and Pinion Steering
- Will fit angle plug heads
- Must be use with engine mounts CH-EM36-S/B
- R.H.D. only

*Denotes item is Mandrel Bent



Chevrolet

V8

Chev Convertible

1955-56-57

Small Block

4-into-1 design

Part No. **CH-36C***

Gasket **HTG-548**

Jet Hot Code **JH-003**

Prim. Pipe	Sec. Pipe	Outlet	Manual	Auto	Oxy Sensor
1-5/8 "		3 " Flange	Yes	Yes	N/A

- Designed to suit Right and Left hand drive
- Will fit angle Plug Heads.
- Will suit most Power Steering boxes
- Also available in 1 3/4 " Primaries on request

Impala & Pontiac R.H.D and L.H.D.

1958-64

Ideal for HOT ROD Applications

Small Block

4 into 1

Part No. **CH-121**

Gasket **HTG-548**

Jet Hot Code **JH-003**

Prim. Pipe	Sec. Pipe	Outlet	Manual	Auto	Oxy Sensor
1 3/4"		3" Flanged	Yes	Yes	N/A

- Suit Manual & Column Auto
- Suit X-style chassis
- Will fit with 11" & 10 1/2" flywheel/ring gear
- Must use Z40 Oil Filter
- Will fit angle and straight plug heads

Impala & Pontiac R.H.D Only

1965-68

Small Block

Try-Y design

Part No. **CH-55***

Gasket **HTG-548**

Jet Hot Code **JH-003**

Prim. Pipe	Sec. Pipe	Outlet	Manual	Auto	Oxy Sensor
1 5/8"	1 7/8"	2"	Yes	Yes	N/A

- Suit Manual & Column Auto
- Suit H-style chassis
- Will fit with 11" & 10 1/2" flywheel/ring gear
- Suits angle and straight plug heads

Truck

C10-C20-C30

Small Block

Try-Y design

Part No. **CH-88***

Gasket **HTG-548**

Jet Hot Code **JH-003**

Prim. Pipe	Sec. Pipe	Outlet	Manual	Auto	Oxy Sensor
1 5/8"	1 3/4"	2 1/4"	Yes	Yes	N/A

- Will not fit 1974-80 models
- Will not fit 4WD
- Will not fit C1500 as chassis is different

*Denotes item is Mandrel Bent



Chevrolet

Chev						Part No.	CH-106SS*
						Gasket	HTG-548
<i>Small Block</i>	Prim. Pipe	Sec. Pipe	Outlet	Manual	Auto	Oxy Sensor	
<i>4-into-1 design</i>	1 3/4"		3" Flanged	N/A	N/A	N/A	

- Polished Stainless Steel
- Universal fit headers.

Chev	R.H.D Only						Part No.	CH-37*
							Gasket	CAE-011G
							Jet Hot Code	JH-003
<i>1955-56-57</i>	Prim. Pipe	Sec. Pipe	Outlet	Manual	Auto	Oxy Sensor		
<i>Big Block</i>	2"		3 1/2" Flanged	Yes	Yes	N/A		
<i>Engine Conversion</i>								
<i>4-into-1 design</i>								

- Will fit most power steering conversions
- Will fit with standard steering box and HK-T-G steering box conversion
- Will fit with HX-HJ Holden front graft
- Must be used with engine mounts CH-EM36-B/B

Chev	R.H.D Only						Part No.	CH-37R&P*
							Gasket	CAE-011G
							Jet Hot Code	JH-003
<i>1955-56-57</i>	Prim. Pipe	Sec. Pipe	Outlet	Manual	Auto	Oxy Sensor		
<i>Big Block</i>	2"		3 1/2" Flanged	Yes	Yes	N/A		
<i>Engine Conversion</i>								
<i>4-into-1 design</i>								

- Designed to fit Rear Steer R.H.D., AOD, & Flamin River Rack & Pinion Steering
- Must be used with engine mounts CH-EM36-B/B

Impala and Belair R.H.D Only						Part No.	CH-37A*
						Gasket	CAE-011G
						Jet Hot Code	JH-003
<i>1965-70</i>	Prim. Pipe	Sec. Pipe	Outlet	Manual	Auto	Oxy Sensor	
<i>Big Block</i>	2"		3 1/2" Flanged	Yes	Yes	N/A	
<i>Engine Conversion</i>							
<i>4-into-1 design</i>							

- Suits Factory Power Steering

*Denotes item is Mandrel Bent



Chevrolet

Truck C10-C20-C30 Big Block Try-Y design	Part No.	CH-63
	Gasket	CAE-011G
	Jet Hot Code	JH-003

Prim. Pipe	Sec. Pipe	Outlet	Manual	Auto	Oxy Sensor
2"	2 1/4"	2 1/2"	Yes	Yes	N/A

- Also fit GMC truck
- R.H.Drive Only
- Will not fit C1500 as Chassis is different

Chev 1955-56-57 GENIII 5.7ltr & LS2 6ltr V8 Engine Conversion 4-into-1 design	Part No.	CH-83*
	Gasket	HTG-548
	Jet Hot Code	JH-003

Prim. Pipe	Sec. Pipe	Outlet	Manual	Auto	Oxy Sensor
1 3/4"		3" Flanged	Yes	Yes	Yes

- R.H.Drive Only
- Suits Power Steering Box and Standard Steering Box

Camaro 1967-68-69 Big Block Engine Conversion 4-into-1 design	Part No.	CH-67*RHD
		CH-67*LHD
	Gasket	CAE-011G
	Jet Hot Code	JH-003

Prim. Pipe	Sec. Pipe	Outlet	Manual	Auto	Oxy Sensor
2"		3 1/2" Flanged	Yes	Yes	Yes

- Will fit with XF Ford, Toyota crown & HQ steering boxes
- Engine must be mounted in centre. Drivers side will not fit if mounted towards the RHS

*Denotes item is Mandrel Bent



Ford

4cyl

Escort						Part No.	CH-32
<i>MKII</i>						Gasket	
<i>2.0ltr inline 4</i>						Jet Hot Code	JH-009
<i>4-into-1 design</i>							
Prim. Pipe	Sec. Pipe	Outlet	Manual	Auto	Oxy Sensor		
1 1/2"	2"	2"	Yes	Yes	N/A		

- Exits on RHS of engine

Escort						Part No.	CH-33A
<i>MKII</i>						Gasket	
<i>2.0ltr inline 4</i>						Jet Hot Code	JH-009
<i>Try-Y design</i>							
Prim. Pipe	Sec. Pipe	Outlet	Manual	Auto	Oxy Sensor		
1 1/2"	1 3/4"	2"	Yes	Yes	N/A		

- Exits on RHS of engine
- Suits overhead cam engine

Cortina						Part No.	CH-33
<i>MK1 & MKII</i>						Gasket	
<i>1.6ltr inline 4</i>						Jet Hot Code	JH-009
<i>Try-Y design</i>							
Prim. Pipe	Sec. Pipe	Outlet	Manual	Auto	Oxy Sensor		
1 1/2"	1 3/4"	2"	Yes	Yes	N/A		

- Exits on LHS of engine
- Will fit MKII Cortina 1600. Cross flow 1968-1971
- Will fit MKI Cortina with fitted with 1600. Cross flow 1963-1967
- Will NOT fit 1967 MKII 1500 pre-cross flow.
- Will NOT fit MK1 with 1200, 1500 cross flow engines.
- Will NOT fit 1600 cross flow when fitted in Escort.

*Denotes item is Mandrel Bent



Ford

6cyl

Falcon						Part No.	CH-15
XP-XM-XL-XK						Gasket	
170-221ci 6cyl						Jet Hot Code	JH-010
Try-Y design							
Prim. Pipe	Sec. Pipe	Outlet	Manual	Auto	Oxy Sensor		
1 1/2"	1 3/4"	2"	Yes	Yes	N/A		
<ul style="list-style-type: none"> Suit low deck engine 							

Falcon						Part No.	CH-16
XR-XT-XW-XY-XA-XB						Gasket	EMG-040
200-250ci 6cyl						Jet Hot Code	JH-010
Try-Y design							
Prim. Pipe	Sec. Pipe	Outlet	Manual	Auto	Oxy Sensor		
1 1/2"	1 3/4"	2"	Yes	Yes	N/A		

Falcon						Part No.	CH-17*
XC-XD-XE-XF						Gasket	DSF034
250 ci 6cyl						Jet Hot Code	JH-010
Try-Y design							
Prim. Pipe	Sec. Pipe	Outlet	Manual	Auto	Oxy Sensor		
1-5/8"	1 3/4"	2-1/4"	Yes	Yes	N/A		
<ul style="list-style-type: none"> Suit cross-flow, cast iron and alloy head engines Will not fit EFI engines (use CH-42) 							

Falcon						Part No.	CH-42
XF						Gasket	EMG-165
6cyl EFI engine						Jet Hot Code	JH-010
Try-Y design							
Prim. Pipe	Sec. Pipe	Outlet	Manual	Auto	Oxy Sensor		
1 1/2"	1 3/4"	2" Flanged	Yes	Yes	N/A		
<ul style="list-style-type: none"> Suit EFI & carburetor engines with Cat converter 							

Falcon & Fairlane						Part No.	CH-72*
EA-EB-ED-EF-EL-AU & XH Ute						Gasket	HTG-042
Fairlane						Jet Hot Code	JH-010
NA-NB-NC-ND							
3.9ltr & 4.0ltr							
Try-Y design							
Prim. Pipe	Sec. Pipe	Outlet	Manual	Auto	Oxy Sensor		
1 5/8"	1 3/4"	2 1/2" Flanged	Yes	Yes	Yes		
<ul style="list-style-type: none"> Cat needs to be shifted back underneath floorpan Will fit Manual & Column auto 							

*Denotes item is Mandrel Bent



Ford

6cyl

Falcon & Fairlane						Part No.	CH-72CP
<i>Connecting Pipe includes Hi Flow Cat Converter suits CH-72 Header</i>							HTG-042
Prim. Pipe	Sec. Pipe	Outlet	Manual	Auto	Oxy Sensor		
2 1/2 "		2 1/2"					
Flanged		Flanged	Yes	Yes	N/A		

Falcon + Territory AWD & RWD						Part No.	CH-82*
<i>BA - BF - FG</i>						Gasket	HTG-559
<i>4.0ltr 6cyl</i>						Jet Hot Code	JH-010
<i>Try-Y design</i>							
Prim. Pipe	Sec. Pipe	Outlet	Manual	Auto	Oxy Sensor		
1 5/8"	1 3/4"	2 1/2"					
		Flanged	Yes	Yes	Yes		

• Cat needs to be shifted back underneath floorpan

Falcon BA-BF-FG 4.0 Ltr 6Cyl						Part No.	CH-82CP
<i>Connecting Pipe includes Hi Flow Cat Converter suits CH-82 Header</i>							HTG-559
Prim. Pipe	Sec. Pipe	Outlet	Manual	Auto	Oxy Sensor		
2 1/2 "		2 1/2"					
Flanged		Flanged	Yes	Yes	Yes		

• Will connect to Original or Aftermarket systems

<i>Connecting Pipe includes Hi Flow Cat Converter suits CH-82 Header</i>						CH-82CP-BA	
						CH-82CP-BF-FG	

Cortina						Part No.	CH-18
<i>TC-TD</i>						Gasket	EMG-004
<i>200-250ci</i>						Jet Hot Code	JH-010
<i>Try-Y design</i>							
Prim. Pipe	Sec. Pipe	Outlet	Manual	Auto	Oxy Sensor		
1 1/2"	1 3/4"	2"					
			Yes	Yes	Yes		

Cortina						Part No.	CH-19
<i>TE-TF and Ford Truck F100-F150-F250-F350</i>						Gasket	EMG-165
<i>6cyl - X Flow Engines</i>						Jet Hot Code	JH-010
<i>Try-Y design</i>							
Prim. Pipe	Sec. Pipe	Outlet	Manual	Auto	Oxy Sensor		
1 1/2"	1 3/4"	2"					
			Yes	Yes	Yes		

• Suit cross-flow, cast iron and alloy head engines

• Duel plate bolt pattern

*Denotes item is Mandrel Bent



Ford Mustang

V8

Mustang 1964-70 289-302 Windsor 4-into-1 design						Part No.	CH-96*
						Gasket	CAE-016G
						Jet Hot Code	JH-003
Prim. Pipe	Sec. Pipe	Outlet	Manual	Auto	Oxy Sensor		
1 5/8"		3" Flanged	Yes	Yes	N/A		

- Suits LHD and RHD with original steering box.
- Will not suit LHD with Mechanical clutch, or Ram assisted Power steering
- Will not suit GT40 heads, EA to AU engines (due to spark plug angle & Starter Motor on LHS)
- For 351 W/sor application, collectors will have to be cut and pointed outwards to clear the transmission.
- Will also suit RRS Rack and Pinion Conversion. RH Drive only
- Read note 2 on page 30

Mustang 1964-70 289-302 Windsor Tri-Y Design						Part No.	CH-120*
						Gasket	CAE-016G
						Jet Hot Code	JH-003
Prim. Pipe	Sec. Pipe	Outlet	Manual	Auto	Oxy Sensor		
1 5/8"	1 7/8"	2 1/4" Flanged	Yes	Yes	N/A		

- Will fit with XD-XE Power Steering box RHD only
- Suits C4 Auto & AOD late transmission with Overdrive Only
- Will Suit LHD Application If No. 3 Pipe Is Modified
- Will Only suit GT40 heads, EA to AU engines, If 90 Degree Boots Are Used (due to spark plug angle & Starter Motor on LHS)
- Top Loader Trans may need modifications to clear slave cylinder
- Read note 2 on page 30

*Denotes item is Mandrel Bent



Ford Cortina Capri Conversions

V8

Cortina TC-TD 289-302 Windsor Engine Conversion Try-Y design		Part No.	CH-66												
		Gasket	CAE-016G												
		Jet Hot Code	JH-003												
	<table border="1" style="width: 100%; border-collapse: collapse; text-align: center;"> <thead> <tr> <th>Prim. Pipe</th> <th>Sec. Pipe</th> <th>Outlet</th> <th>Manual</th> <th>Auto</th> <th>Oxy Sensor</th> </tr> </thead> <tbody> <tr> <td>1 5/8"</td> <td>1 3/4"</td> <td>2"</td> <td>Yes</td> <td>Yes</td> <td>N/A</td> </tr> </tbody> </table>	Prim. Pipe	Sec. Pipe	Outlet	Manual	Auto	Oxy Sensor	1 5/8"	1 3/4"	2"	Yes	Yes	N/A		
Prim. Pipe	Sec. Pipe	Outlet	Manual	Auto	Oxy Sensor										
1 5/8"	1 3/4"	2"	Yes	Yes	N/A										

- Will not suit with starter motor on LHS
- Read note 2 on page 30

Cortina TE-TF 289-302 Windsor Engine Conversion 4-into-1 design		Part No.	CH-25*												
		Gasket	CAE-016G												
		Jet Hot Code	JH-003												
	<table border="1" style="width: 100%; border-collapse: collapse; text-align: center;"> <thead> <tr> <th>Prim. Pipe</th> <th>Sec. Pipe</th> <th>Outlet</th> <th>Manual</th> <th>Auto</th> <th>Oxy Sensor</th> </tr> </thead> <tbody> <tr> <td>1 5/8"</td> <td></td> <td>2"</td> <td>Yes</td> <td>Yes</td> <td>N/A</td> </tr> </tbody> </table>	Prim. Pipe	Sec. Pipe	Outlet	Manual	Auto	Oxy Sensor	1 5/8"		2"	Yes	Yes	N/A		
Prim. Pipe	Sec. Pipe	Outlet	Manual	Auto	Oxy Sensor										
1 5/8"		2"	Yes	Yes	N/A										

- Must be used with gear reduction starter motor (G/R-02/A or M)
 - These headers were originally designed to suit the CRS conversion.
- We suggest that they be trial fitted as we have been advised that there is verations.
- Read note 2 on page 30

Capri & MK3 Zephyr- 1962 289-302 Windsor Engine Conversion Try-Y design		Part No.	CH-46												
		Gasket	CAE-016G												
		Jet Hot Code	JH-003												
	<table border="1" style="width: 100%; border-collapse: collapse; text-align: center;"> <thead> <tr> <th>Prim. Pipe</th> <th>Sec. Pipe</th> <th>Outlet</th> <th>Manual</th> <th>Auto</th> <th>Oxy Sensor</th> </tr> </thead> <tbody> <tr> <td>1 5/8"</td> <td>1 3/4"</td> <td>2"</td> <td>Yes</td> <td>Yes</td> <td>N/A</td> </tr> </tbody> </table>	Prim. Pipe	Sec. Pipe	Outlet	Manual	Auto	Oxy Sensor	1 5/8"	1 3/4"	2"	Yes	Yes	N/A		
Prim. Pipe	Sec. Pipe	Outlet	Manual	Auto	Oxy Sensor										
1 5/8"	1 3/4"	2"	Yes	Yes	N/A										

- Must be used with gear reduction starter motor (G/R-02/A or M)
- Will fit with Rod Shop conversion
- Suits GT40 and AU Series3 GT40TP Heads
- Read note 2 on page 30

Cortina TC-TD 302-351 Cleveland Engine Conversion Try-Y design		Part No.	CH-68												
		Gasket	HTG-002												
		Jet Hot Code	JH-003												
	<table border="1" style="width: 100%; border-collapse: collapse; text-align: center;"> <thead> <tr> <th>Prim. Pipe</th> <th>Sec. Pipe</th> <th>Outlet</th> <th>Manual</th> <th>Auto</th> <th>Oxy Sensor</th> </tr> </thead> <tbody> <tr> <td>1 3/4"</td> <td>1 7/8"</td> <td>2 1/4"</td> <td>Yes</td> <td>Yes</td> <td>N/A</td> </tr> </tbody> </table>	Prim. Pipe	Sec. Pipe	Outlet	Manual	Auto	Oxy Sensor	1 3/4"	1 7/8"	2 1/4"	Yes	Yes	N/A		
Prim. Pipe	Sec. Pipe	Outlet	Manual	Auto	Oxy Sensor										
1 3/4"	1 7/8"	2 1/4"	Yes	Yes	N/A										

- Must be used with gear reduction starter motor (G/R-02/A or M)

NOTE 2

• If Customer is using Aftermarket Heads eg-Edelbrock or Patriot ETC.
 Check the spark plug angle is the same as original O.E.M cast iron heads.

*Denotes item is Mandrel Bent



Ford

V8

Falcon XK-XL-XM-XP 289-302 Windsor Engine Conversion Try-Y design RH Starter Motor Only						Part No.	CH-65*
						Gasket	CAE-016G
						Jet Hot Code	JH-003
	Prim. Pipe	Sec. Pipe	Outlet	Manual	Auto	Oxy Sensor	
1 5/8"	1 3/4"	2 Bolt 2 1/4"	Yes	Yes	N/A		

- Will fit with Rod Shop, Seelenmeyer and other available conversion kits.
- Column auto linkage needs to be modified
- Will not fit with GT40 heads or GT40TP heads
- Will fit with RRS Suspension & XA-XB-XC Ford Power Steering Box
- Read note 2 on page 30

Falcon XK-XL-XM-XP - Fitted with EA-AU E.F.I Windsor V8 Engine (LH or RH Starter) 289-302 Windsor Engine Conversion Try-Y design LH or RH Starter Motor						Part No.	CH-65A*
						Gasket	CAE-016G
						Jet Hot Code	JH-003
	Prim. Pipe	Sec. Pipe	Outlet	Manual	Auto	Oxy Sensor	
1 5/8"	1 3/4"	2 Bolt 2 1/4"	Yes	Yes	x 2 Yes		

- Will fit with Rod Shop, Seelenmeyer and other available conversion kits.
- Column auto linkage needs to be modified
- Will suit LH and RH Starter Motor
- Will also fit with other available engine mounts
- Will fit with EA-EB-ED-EL-EF-AU-EFI Engines all GT-40 Heads
- Will suit AU series 3 GT40TP or GT40P heads
- Will also suit RRS Suspension / Rack
- Read note 2 on page 30

Falcon XR-XT-XW-XY-XA-XB-XC-XE-XF Fairlane ZA-ZB-ZC-ZD-ZK 289-302 Windsor Try-Y design						Part No.	CH-70*
						Gasket	CAE-016G
						Jet Hot Code	JH-003
	Prim. Pipe	Sec. Pipe	Outlet	Manual	Auto	Oxy Sensor	
1 5/8"	1 3/4"	Flanged 2 1/4"	Yes	Yes	N/A		

- Will not suit LHS starter
- Will not suit early EFI Engines
- Will not suit C6, AOD & BTR Transmissions - **USE CH-70A**
- Read note 3 on page 31

NOTE 3

• Part No. CH-70, CH-70A & CH-70B - Outlets Are Offset to Clear
 Later Model A.O.D & B.T.R Auto Transmissions

*Denotes item is Mandrel Bent



Ford

V8

Falcon						Part No.	CH-70A*
XR-XT-XW-XY-XA-XB-XC-XE-XF-XH-XG						Gasket	CAE-016G
Fairlane						Jet Hot Code	JH-003
ZF-ZK							
Engine Conversion	Prim. Pipe	Sec. Pipe	Outlet	Manual	Auto	Oxy Sensor	
302 EFI Windsor	1 5/8"	1 3/4"	2 Bolt 2 1/4"	Yes	Yes	Yes	
EA-AU Engine	<ul style="list-style-type: none"> • Will suit LHS starter -EA-ED-EF-EL-AU with B.T.R. Trans • Will suit GT40P Heads--AU2, & XR8 • Will suit AU Series II -GT40TP Heads. • Read note 3 on page 31 						
Try-Y design							

Falcon						Part No.	CH-70B*
XA-XB-XC-XE-XF						Gasket	CAE-016G
Fairlane						Jet Hot Code	JH-003
ZF-ZK							
Engine Conversion	Prim. Pipe	Sec. Pipe	Outlet	Manual	Auto	Oxy Sensor	
302 EFI Windsor	1 5/8"	1 3/4"	Flanged 2 1/4"	Yes	Yes	x 2 Yes	
EA-AU2 and XR8 Engine	<ul style="list-style-type: none"> • Will suit RHS starter only • Will suit GT40P Heads--AU2, and XR8 • Will suit AU Series II GT40TP heads • Will suit early C4-C6 Auto and Toploader Transmission • Must use with right angle plug leads • Will only suit starter on RHS. • Read note 3 on page 31 						
Try-Y design							

Falcon 1991- 1998						Part No.	CH-102*
EB-EL & XH - XG Ute						Gasket	CAE-016G
Fairlane						Jet Hot Code	JH-003
NB-NL							
Engine Conversion	Prim. Pipe	Sec. Pipe	Outlet	Manual	Auto	Oxy Sensor	
302 EFI Windsor	1 1/2"	1 3/4"	2"	Yes	Yes	Yes	
Try-Y design	<ul style="list-style-type: none"> • Read note 2 on page 30 						

Falcon 1998-2000						Part No.	CH-103*
AU						Gasket	CAE-016G
Fairlane						Jet Hot Code	JH-003
AU							
Engine Conversion	Prim. Pipe	Sec. Pipe	Outlet	Manual	Auto	Oxy Sensor	
302 EFI Windsor	1 1/2"	1 3/4"	2 1/4"	Yes	Yes	Yes	
Try-Y design	<ul style="list-style-type: none"> • Read note 2 on page 30 						

*Denotes item is Mandrel Bent



Ford

V8

Compact Fairlane						Part No.	CH-111*
1960 - 1964						Gasket	CAE-016G
289 - 302 Windsor						Jet Hot Code	JH-003
<i>Try - Y Design</i>							
Prim. Pipe	Sec. Pipe	Outlet	Manual	Auto	Oxy Sensor		
1-5/8 "	1-7/8 "	2-1/4 "	Yes	Yes	No		
<ul style="list-style-type: none"> • Will not suit GT40 Heads or EB - AU EFI Engines • Will suit Column Auto, T-Bar and Manual Transmissions. • Read note 2 on page 30 							

Falcon						Part No.	CH-47*
XT-XR-XW-XY-XA-XB-XC-XD-XE-XF						Gasket	HTG-002
ALL FAIRLANES						Jet Hot Code	JH-003
<i>ZA-ZF</i>							
302-351 Cleveland 2V							
<i>Try-Y design</i>							
Prim. Pipe	Sec. Pipe	Outlet	Manual	Auto	Oxy Sensor		
1 3/4"	2 "	2 1/2 "	Yes	Yes	N/A		
<ul style="list-style-type: none"> • Will fit with A/C and power steering • Will suit C6 C10 & FMX Auto • Suit 2V heads (see CH-47A for 4v heads) • Will not suit column auto • Will not suit Bosch early style starter motor. 							

Falcon						Part No.	CH-47A*
XT-XR-XW-XY-XA-XB-XC-XD-XE-XF						Gasket	CAE-036-4VG
ALL FAIRLANES						Jet Hot Code	JH-003
<i>ZA-ZF</i>							
302-351 Cleveland 4V							
<i>Try-Y design</i>							
Prim. Pipe	Sec. Pipe	Outlet	Manual	Auto	Oxy Sensor		
1 3/4"	2 "	2 1/2 "	Yes	Yes	N/A		
<ul style="list-style-type: none"> • Same as CH-47 but suit 4V heads • 4 into 1 style headers CH-112A 							

FORD ZEPHYR Mk3 1962						Part No.	CH-46*
						Gasket	CAE-016G
						Jet Hot Code	JH-003
<i>289-302 Windsor</i>							
<i>Try-Y design</i>							
Prim. Pipe	Sec. Pipe	Outlet	Manual	Auto	Oxy Sensor		
1 5/8"	1 3/4"	2"	Yes	Yes	N/A		
<ul style="list-style-type: none"> • Will fit standard steering box. 							

*Denotes item is Mandrel Bent



Ford

V8

Falcon XT-XR-XW-XY-XA-XB-XC-XD-XE-XF						Part No.	CH-35*
						Gasket	HTG-507
Fairlane ZA-ZD to ZL-NC						Jet Hot Code	JH-003
Engine Conversion 429-460 Big Block Try-Y design	Prim. Pipe	Sec. Pipe	Outlet	Manual	Auto	Oxy Sensor	
	1 7/8"	2"	2 1/4"	Yes	Yes	N/A	

- Will fit with Rod Shop or Pacemaker engine mounts
- Engine mounts available to suit P/N CH-EM35 - XR-XT-XW-XY and Fairlanes ZA-ZB-ZC-ZD
- also P/N CH-EM35/2 Falcons XA-XB-XC-XD-XE-XF and Fairlanes ZF-ZG-ZH-ZJ-ZK-ZL-NA-NC

Falcon BA-BF						Part No.	CH-101T*
						Gasket	
5.4l Boss V8 Try-Y design						Jet Hot Code	JH-003
	Prim. Pipe	Sec. Pipe	Outlet	Manual	Auto	Oxy Sensor	
	1 5/8"	2"	2 1/2" Flanged	Yes	Yes	Yes	

- Ideal for mid range power gain
- CH-101CP BA Connecting pipe for 2 1/2" Twin System Includes Hi-Flow Cats.
- CH-101CP BF-FG Connecting pipe for 2 1/2" Twin System Includes Hi-Flow Cats.
- Complete Polished Stainless Steel system available from Cats back.
- STR-250EP Engine Pipe - STR-250S/S Intermediate Muffler - STR-251S/S Rear Muffler Hi-Flow Cats Optional
- Connecting to standard system will require connecting pipes including cats to be modified.

Falcon BA-BF						Part No.	CH-101*
						Gasket	
5.4l Boss V8 4-into-1 design Big primaries						Jet Hot Code	JH-003
	Prim. Pipe	Sec. Pipe	Outlet	Manual	Auto	Oxy Sensor	
	1 3/4"	N/A	3" Flanged	Yes	Yes	Yes	

- Ideal for top-end power gain

Falcon BA-BF						CH-101-CPBA	
5.4l Boss V8 Connection Pipe						CH-101-CP-BF-FG	

- CH-101CP BA Connecting pipe for 2 1/2" Twin System Includes Hi-Flow Cats.
- CH-101CP BF-FG Connecting pipe for 2 1/2" Twin System Includes Hi-Flow Cats.
- Complete Polished Stainless Steel system available from Cats back.
- STR-250EP Engine Pipe - STR-250S/S Intermediate Muffler - STR-251S/S Rear Muffler Hi-Flow Cats Optional
- Connecting to standard system will require connecting pipes including cats to be modified.

*Denotes item is Mandrel Bent



Ford & Fairlanes

V8

Falcon & Fairlane						Part No.	CH-112*
302-351 Cleveland 2v						Gasket	HTG-002
Suits all models						Jet Hot Code	JH-003
XR-XT-XW-XY-XA-XB-XC-XD						Prim. Pipe	Sec. Pipe
XE-XF						Outlet	Manual
Fairlanes ZA-ZD to ZL-NC						Auto	Oxy Sensor
1 3/4"		3" Flanged	Yes	Yes	No		

4-into-1 design.

- When fitting C10, Dip Stick requires Modification
- Will not suit C6, FMX or Manual Kick Down.
- Recommended to use Gear Reduction Starter Motor P/N G/R-02/1.9
- Suits Toploader Trans & Original Power Steering. Will not suit Column Change

Falcon & Fairlane						Part No.	CH-112A*
302-351 Cleveland 4V						Gasket	CAE-036-4VG
Suits all models -XR-XT-XW-XY						Jet Hot Code	JH-003
XA-XB-XC-XD-XE-XF						Prim. Pipe	Sec. Pipe
Fairlanes ZA-ZD to ZL-NC						Outlet	Manual
1 7/8 "		3" Or 3.5 " Flanged	Yes	Yes	No		

4-into-1 design. big primaries

- When fitting C10 , Dip Stick requires Modification
- Will not suit C6, FMX or Manual Kick Down.
- Recommended to use Gear Reduction Starter Motor P/N G/R-02/1.9
- Suits Toploader Trans & Original Power Steering. Will not suit Column Change

Falcon & Fairlane						Part No.	CH-112B*
302-351 Cleveland 2V						Gasket	HTG-002
Suits Manual Toploader &						Jet Hot Code	JH-003
with Power Steering						Prim. Pipe	Sec. Pipe
4-into-1 design-big primaries						Outlet	Manual
1 7/8 "		3" Flanged	Yes	Yes	No		

- When fitting C10 , Dip Stick requires Modification
- Will not suit C6, FMX or Manual Kick Down.
- Will not suit Column Change
- Recommended to use Gear Reduction Starter Motor P/N G/R-02/1.9

*Denotes item is Mandrel Bent



Ford F100 - F250

V8

Ford F-100 & F-250 2WD Ford F-100 & F-250 4WD 302-351 Cleveland 2V Suits up 1979 only	Part No.	CH-117*
	Part No.	CH-118*
	Gasket	HTG-002
	Jet Hot Code	JH-003

Suits Manual

Prim. Pipe	Sec. Pipe	Outlet	Manual	Auto	Oxy Sensor
1 3/4"	2"	2 1/4"	Yes	Yes	No

Note: LH Side will require modification for Auto

Suits Air-Con. and Power Steering

Ford F-100 & F-250 2WD Ford F-100 & F-250 4WD 302-351 Cleveland 2V Suits up 1981 - 1986	Part No.	CH-117A*
	Part No.	CH-118*
	Gasket	HTG-002
	Jet Hot Code	JH-003

Ford F-100, F-250, F-350 & BRONCO 2WD & 4WD 429-460 Big Block Tri-Y Design	Part No.	CH-119*
	Gasket	HTG-002
	Jet Hot Code	JH-003

Suits Manual

Prim. Pipe	Sec. Pipe	Outlet	Manual	Auto	Oxy Sensor
1 7/8"	2"	Flanged 2 1/2"	Yes	Yes	No

• Will fit 1979 to 1984 only

*Denotes item is Mandrel Bent



Chrysler

6cyl

Valiant Slant 6 Try-Y design						Part No.	CH-21
						Gasket	DSF-5
						Jet Hot Code	JH-010
Prim. Pipe	Sec. Pipe	Outlet	Manual	Auto	Oxy Sensor		
1 5/8"	1 3/4"	2"	Yes	Yes	N/A		

- Will fit with large starter motor
- Will not fit with remote oil filter
- Replacement for original cast iron manifolds.

Truck Slant 6 Try-Y design						Part No.	CH-22
						Gasket	DSF-5
						Jet Hot Code	JH-010
Prim. Pipe	Sec. Pipe	Outlet	Manual	Auto	Oxy Sensor		
1 5/8"	1 3/4"	2"	Yes	Yes	N/A		

- Replacement for original cast iron manifolds.

All cars HEMI 6 Try-Y design						Part No.	CH-23
						Gasket	HTG-013
						Jet Hot Code	JH-010
Prim. Pipe	Sec. Pipe	Outlet	Manual	Auto	Oxy Sensor		
1 5/8"	1 3/4"	2"	Yes	Yes	N/A		

- Will suit cars with A/C and Triple Webber Carburetors
- Replacement for original cast iron manifolds.

All trucks HEMI 6 Try-Y design						Part No.	CH-24
						Gasket	HTG-013
						Jet Hot Code	JH-010
Prim. Pipe	Sec. Pipe	Outlet	Manual	Auto	Oxy Sensor		
1 5/8"	1 3/4"	2"	Yes	Yes	N/A		

- Replacement for original cast iron manifolds.

*Denotes item is Mandrel Bent



Chrysler

V8

Valiant						Part No.	CH-38A*
<i>AP5-AP6-VC-VE-VF & S-Model</i>						Gasket	CAE-034G
<i>318-360 V8</i>						Jet Hot Code	JH-010
<i>Block Hugger design</i>							
<i>1965-1966</i>							
Prim. Pipe	Sec. Pipe	Outlet	Manual	Auto	Oxy Sensor		
1 5/8"		2 1/2" Flanged	Yes	Yes	N/A		

Valiant						Part No.	CH-03*
<i>VE-VF-VG-VH-VJ-CL-CM-CJ</i>						Gasket	CAE-034G
<i>273-318-360 V8</i>						Jet Hot Code	JH-010
<i>Try-Y design</i>							
<i>1967-1980</i>							
Prim. Pipe	Sec. Pipe	Outlet	Manual	Auto	Oxy Sensor		
1 5/8"	1 3/4"	2 1/4"	Yes	Yes	N/A		

- Will fit Dodge-Charger, Challenger with original R.H.Drive Steering Box 1961 Models

Chrysler 300C V8						Part No.	CH-122
<i>Block Hugger Design</i>						Gasket	
						Jet Hot Code	JH-003
Prim. Pipe	Sec. Pipe	Outlet	Manual	Auto	Oxy Sensor		
1 3/4"	N/A	3" Flanged	Yes	Yes	Yes		

*Denotes item is Mandrel Bent



Toyota

Landcruiser						Part No.	CH-50
80, 105, 1FZ - FE series						Gasket	
4.5l twin cam petrol						Jet Hot Code	JH-010
Try-Y design							
Prim. Pipe	Sec. Pipe	Outlet	Manual	Auto	Oxy Sensor		
1 3/4"	2"	2" Flanged	Yes	Yes	Yes		

- FZJ 80R, FZJ105.

Landcruiser						Part No.	CH-52
75, 1FZ - FE Series Ute & Pickup						Gasket	
4.5l twin cam petrol						Jet Hot Code	JH-010
Try-Y design							
Prim. Pipe	Sec. Pipe	Outlet	Manual	Auto	Oxy Sensor		
1 3/4"	2"	2" Flanged	Yes	Yes	Yes		

- FZJ 75R

Hilux						Part No.	CH-99
1992-1999						Gasket	
3.8l Holden V6 EcoTec						Jet Hot Code	JH-010
Engine Conversion							
3-into-1 design							
Prim. Pipe	Sec. Pipe	Outlet	Manual	Auto	Oxy Sensor		
1 3/4"		2" Flanged	Yes	Yes	Yes		

- Must be used with Rod Shop engine mounts P/N-M11RV6
- May also fit with Mark's 4WD engine mounts

Landcruiser						Part No.	CH-98A
80, 105, 1FZ, FE Series						Gasket	HTG-548
						Jet Hot Code	JH-010
Prim. Pipe	Sec. Pipe	Outlet	Manual	Auto	Oxy Sensor		
1 3/4"	2"	2"	Yes	Yes	Yes		

- Block Hugger will fit with LS1-2-3 Chev engine conversion
- Suits Marks 4WD Conversions

*Denotes item is Mandrel Bent



Nissan

Patrol GQ Ford Maverick	Part No.	CH-45
	Gasket	
	Jet Hot Code	JH-010

Prim. Pipe	Sec. Pipe	Outlet	Manual	Auto	Oxy Sensor
1 3/4"	2"	2"	Yes	Yes	Yes

TB-42 6cyl petrol
 TD-42 Diesels
 Try -Y-Design

- Will fit with A/C and power steering
- Will also fit 4.2L Carby, EFI & Diesel Engine
- Fitting Time 2 Hours.

Nissan 300ZX - Z30-Z31-Z32 Fitted With LS1,LS2,LS3 Engines	Part No.	CH-123
	Gasket	HTG-548
	Jet Hot Code	JH-010

Prim. Pipe	Sec. Pipe	Outlet	Manual	Auto	Oxy Sensor
1 3/4"	2"	2 1/2"	Yes	Yes	Yes

Nissan Patrol GQ Ford Mavric	Part No.	CH-98A
	Gasket	HTG-548
	Jet Hot Code	JH-010

Prim. Pipe	Sec. Pipe	Outlet	Manual	Auto	Oxy Sensor
1 3/4"		3" Flanged	Yes	Yes	Yes

- Block Hugger will fit with LS1-2-3 Chev engine conversion

Y piece to join exhaust	CH-98A Y PIECE
Centre Piece To Join Exhaust	CH-98A C/P

*Denotes item is Mandrel Bent



BMC/Leyland Mini

Mini 1961 onwards (all models) 998cc-1275cc Try-Y design						Part No.	CH-104
						Gasket	
						Jet Hot Code	JH-009
Prim. Pipe	Sec. Pipe	Outlet	Manual	Auto	Oxy Sensor		
1 3/8"	1 1/2"	2"	Yes	Yes	N/A		

- Long branch outlet

Mini 1961 onwards (all models except Cooper S) 998cc-1275cc 4-into-1 design						Part No.	CH-105
						Gasket	
						Jet Hot Code	JH-009
Prim. Pipe	Sec. Pipe	Outlet	Manual	Auto	Oxy Sensor		
1 3/8"		2"	Yes	Yes	N/A		

- Short branch outlet

*Denotes item is Mandrel Bent



International

Truck						Part No.	CH-29
1610 & A-series 240, 260, 281						Gasket	
6cyl						Jet Hot Code	JH-003
Try-Y design							
Prim. Pipe	Sec. Pipe	Outlet	Manual	Auto	Oxy Sensor		
1 3/4"	1 7/8"	2"	Yes	Yes	N/A		

• Will not fit with CAV starter

Acco						Part No.	CH-43
C-1800, 510 & 1910 - Cab Over Engine Style Body						Gasket	HTG-501
345-392 V8						Jet Hot Code	JH-003
Try-Y design							
Prim. Pipe	Sec. Pipe	Outlet	Manual	Auto	Oxy Sensor		
1 3/4"	2"	2 1/2"	Yes	Yes	N/A		

Acco						Part No.	CH-43A
C&D series 1710A & 1810A Long Nose bonnet Body						Gasket	HTG-501
345-392 V8						Jet Hot Code	JH-003
Try-Y design							
Prim. Pipe	Sec. Pipe	Outlet	Manual	Auto	Oxy Sensor		
1 3/4"	2"	2 1/2"	Yes	Yes	N/A		

*Denotes item is Mandrel Bent



Bedford

Truck 214J series 6cyl Try-Y design						Part No.	CH-26						
						Gasket							
						Jet Hot Code	JH-010						
						<table border="1"> <thead> <tr> <th>Prim. Pipe</th> <th>Sec. Pipe</th> <th>Outlet</th> <th>Manual</th> <th>Auto</th> <th>Oxy Sensor</th> </tr> </thead> <tbody> <tr> <td>1 1/2"</td> <td>1 3/4"</td> <td>2"</td> <td>Yes</td> <td>Yes</td> <td>N/A</td> </tr> </tbody> </table>	Prim. Pipe	Sec. Pipe	Outlet	Manual	Auto	Oxy Sensor	1 1/2"
Prim. Pipe	Sec. Pipe	Outlet	Manual	Auto	Oxy Sensor								
1 1/2"	1 3/4"	2"	Yes	Yes	N/A								

Truck & Bus 300 6cyl Try-Y design						Part No.	CH-41						
						Gasket							
						Jet Hot Code	JH-010						
						<table border="1"> <thead> <tr> <th>Prim. Pipe</th> <th>Sec. Pipe</th> <th>Outlet</th> <th>Manual</th> <th>Auto</th> <th>Oxy Sensor</th> </tr> </thead> <tbody> <tr> <td>1 3/4"</td> <td>2"</td> <td>2 1/2"</td> <td>Yes</td> <td>Yes</td> <td>N/A</td> </tr> </tbody> </table>	Prim. Pipe	Sec. Pipe	Outlet	Manual	Auto	Oxy Sensor	1 3/4"
Prim. Pipe	Sec. Pipe	Outlet	Manual	Auto	Oxy Sensor								
1 3/4"	2"	2 1/2"	Yes	Yes	N/A								

*Denotes item is Mandrel Bent



BMW

E-36 3 series

318iS, Ti & TS

4cyl Twin Cam

Try-Y design

Part No. **CH-109***

Jet Hot Code **JH-009**

Prim. Pipe	Sec. Pipe	Outlet	Manual	Auto	Oxy Sensor
1 5/8"	1 3/4"	Flanged*	Yes	Yes	N/A

- Replacement for factory headers. Bolts to original 4 bolt flange
- Only suit twin-cam engine

*Denotes item is Mandrel Bent



Block Hugger Headers

Chev						Part No.	CH-13*
						Gasket	CAE-010G
	<i>Small Block V8</i>					Jet Hot Code	JH-001
	Prim. Pipe	Sec. Pipe	Outlet	Manual	Auto	Oxy Sensor	
	1 5/8"		3" Flanged	N/A	N/A	N/A	

- Suit VORTEC engine with straight plug heads

Chev						Part No.	CH-13SS*
						Gasket	CAE-010G
	<i>Small Block V8</i>						
	Prim. Pipe	Sec. Pipe	Outlet	Manual	Auto	Oxy Sensor	
	1 5/8"		3" Flanged	N/A	N/A	N/A	

- Same design as CH-13 but in polished Stainless Steel

Chev						Part No.	CH-13BSS*
						Gasket	CAE-010G
	<i>Small Block V8</i>						
	Prim. Pipe	Sec. Pipe	Outlet	Manual	Auto	Oxy Sensor	
	1 5/8"		3" Flanged	N/A	N/A	N/A	

- Polished Stainless Steel
- Exits at rear of head

Chev						Part No.	CH-13C*
						Gasket	HTG-548
	<i>Small Block V8</i>					Jet Hot Code	JH-001
	Prim. Pipe	Sec. Pipe	Outlet	Manual	Auto	Oxy Sensor	
	1 5/8"		3" Flanged	N/A	N/A	N/A	

- Rams horn design.
- Suit straight & angle plug heads
- Suit Toyota L/Cruiser & 80 Series Conversion

*Denotes item is Mandrel Bent



Block Hugger Headers

Chev	Part No.	CH-13D*
	Gasket	CAE-010G
	Jet Hot Code	JH-001

Small Block V8

Prim. Pipe	Sec. Pipe	Outlet	Manual	Auto	Oxy Sensor
1 5/8"		2 1/2" Flanged	N/A	N/A	N/A

- Features inline 4 into 1 collector for extra clearance
- Will fit with angle plug heads
- Will fit EH Holden with R & P steering

Chev	Part No.	CH-13E*
	Gasket	CAE-010G
	Jet Hot Code	JH-001

Small Block V8

Prim. Pipe	Sec. Pipe	Outlet	Manual	Auto	Oxy Sensor
1 5/8"		3" Flanged	N/A	N/A	N/A

- Extra clearance between engine block & header for R & P Steering.
- Suit both Straight and Angle Plug heads
- Will suit Wazrodz '34 Chev.

Chev	Part No.	CH-39*
	Gasket	CAE-011G
	Jet Hot Code	JH-001

Big Block V8

Prim. Pipe	Sec. Pipe	Outlet	Manual	Auto	Oxy Sensor
2"		3 1/2" Flanged	N/A	N/A	N/A

- Will fit 1958-64 Chev - RH Drive and LH Drive
- Suitable for all Hot-Rods

*Denotes item is Mandrel Bent



Block Hugger Headers

LS-1-2-3 Engines

Chev/Holden	Part No.	CH-98*
	Gasket	HTG-548
	Jet Hot Code	JH-001

GENIII 5.7l & LS2 6l V8

Prim. Pipe	Sec. Pipe	Outlet	Manual	Auto	Oxy Sensor
1 3/4"		3" Flanged	N/A	N/A	Yes

- Ideal for 4WD's, Toyota Landcruiser and Hot Rod conversions.
- Outlet drops straight down behind engine mounts.

Chev/Holden	Part No.	CH-98A*
	Gasket	HTG-548
	Jet Hot Code	JH-001

All LS-1-2-3 Engines

Prim. Pipe	Sec. Pipe	Outlet	Manual	Auto	Oxy Sensor
1 3/4"		3" Flanged	N/A	N/A	Yes

- Ideal for 4WD's, Nissan Patrol, Toyota Landcruiser and Hot Rod conversions.
- Outlet exits at rear of head angled back suit 4WD.

*Denotes item is Mandrel Bent



Block Hugger Headers

Ford						Part No.	CH-20*
<i>Windsor V8</i>						Gasket	CAE-016G
						Jet Hot Code	JH-001
Prim. Pipe	Sec. Pipe	Outlet	Manual	Auto	Oxy Sensor		
1 5/8"		3" Flanged	N/A	N/A	N/A		

- Will not fit GT40 heads

Ford						Part No.	CH-20A*
<i>Windsor V8</i>						Gasket	CAE-016G
						Jet Hot Code	JH-001
Prim. Pipe	Sec. Pipe	Outlet	Manual	Auto	Oxy Sensor		
1 5/8"		2 1/2" Flanged	N/A	N/A	N/A		

- Features inline 4 into 1 collector for extra clearance

Ford						Part No.	CH-20B*
<i>Windsor V8</i>						Gasket	CAE-016G
						Jet Hot Code	JH-001
Prim. Pipe	Sec. Pipe	Outlet	Manual	Auto	Oxy Sensor		
1 5/8"		2 1/2" Flanged	N/A	N/A	Yes		

- Designed EF-AU EFI engine with LHS starter. Provision for oxy sensors on both sides
- Features inline 4 into 1 collector for extra clearance
- Will suit GT40TP Heads - Suggest to use right angle plug leads.

Ford						Part No.	CH-40SS*
<i>Windsor V8</i>						Gasket	CAE-016G
						Jet Hot Code	
Prim. Pipe	Sec. Pipe	Outlet	Manual	Auto	Oxy Sensor		
1 5/8"		3" Flanged	N/A	N/A	N/A		

- Polished Stainless Steel
- Exits behind the rear ports. Suits EFI engines with RHS or LHS starter

*Denotes item is Mandrel Bent



Block Hugger Headers

Ford						Part No.	CH-30*
						Gasket	HTG-002
						Jet Hot Code	JH-001
<i>Cleveland V8</i>							
<i>Ford F100, D Series</i>							
Prim. Pipe	Sec. Pipe	Outlet	Manual	Auto	Oxy Sensor		
1 3/4"		3" Flanged	N/A	N/A	N/A		

- Known to fit the following applications: '79 series II Jag, '85-'86 Landcruiser, 53 - 64 F-100, and D - Series Ford.
- Fits most Hot Rod applications & engine conversions

Ford						Part No.	CH-30 4V*
						Gasket	CAE-036-4VG
						Jet Hot Code	JH-001
<i>Cleveland V8</i>							
Prim. Pipe	Sec. Pipe	Outlet	Manual	Auto	Oxy Sensor		
1 3/4"		3" Flanged	N/A	N/A	N/A		

- Same as CH-30 but to suit 4V heads

Ford						Part No.	CH-30A*
						Gasket	HTG-002
						Jet Hot Code	JH-001
<i>Cleveland V8</i>							
Prim. Pipe	Sec. Pipe	Outlet	Manual	Auto	Oxy Sensor		
1 3/4"		3" Flanged	N/A	N/A	N/A		

- Drivers side is tighter to clear chassis rails and steering shaft. Ideal for A-Model's
- Must be used with gear reduction starter G/R-02/A or M

Ford						Part No.	CH-53*
						Gasket	HTG-507
						Jet Hot Code	JH-001
<i>429-460 Big Block V8</i>							
Prim. Pipe	Sec. Pipe	Outlet	Manual	Auto	Oxy Sensor		
2"		3 1/2" Flanged	N/A	N/A	N/A		

*Denotes item is Mandrel Bent



Block Hugger Headers

Ford	Part No.	CH-54*
	Gasket	CAE-024G
	Jet Hot Code	JH-001

Sidevalve

Prim. Pipe	Sec. Pipe	Outlet	Manual	Auto	Oxy Sensor
1 5/8"		2 1/2" Flanged	N/A	N/A	N/A

- Both sides exit below middle port
- Known to fit '52 Ford pickup and '53 Ford Customline
- Fit early & late engines

Ford	Part No.	CH-54A*
	Gasket	CAE-024G
	Jet Hot Code	JH-001

Sidevalve

Prim. Pipe	Sec. Pipe	Outlet	Manual	Auto	Oxy Sensor
1 5/8"		2 1/2" Flanged	N/A	N/A	N/A

- Fit early & late engines
- Drivers side exits at front of engine, Passenger side exits below middle port

Holden	Part No.	CH-34*
	Gasket	HTG-013
	Jet Hot Code	JH-001

253-308 V8

Prim. Pipe	Sec. Pipe	Outlet	Manual	Auto	Oxy Sensor
1 5/8"		3" Flanged	N/A	N/A	N/A

Holden	Part No.	CH-75*
	Gasket	HTG-513
	Jet Hot Code	JH-001

5ltr EFI V8

Prim. Pipe	Sec. Pipe	Outlet	Manual	Auto	Oxy Sensor
1 5/8"		3" Flanged	N/A	N/A	Yes

- Must be used with Holden HQ-WB V8 engine mounts
- Will suit 5ltr conversions into Toyota Landcruiser and Nissan Patrol

Holden	Part No.	CH-75A*
	Gasket	HTG-513
	Jet Hot Code	JH-001

- Ideal for 4WD Conversions
- Same Specs As CH-75
- Must be used with Commodore V8 engine mounts will suit HQ-WB Engine mounts

*Denotes item is Mandrel Bent



Block Hugger Headers

Chrysler						Part No.	CH-38*
						Gasket	CAE-034G
<i>318-360 Small Block</i>						Jet Hot Code	JH-001
Prim. Pipe	Sec. Pipe	Outlet	Manual	Auto	Oxy Sensor		
1 5/8"		3" Flanged	N/A	N/A	N/A		

Chrysler						Part No.	CH-48*
						Gasket	CAE-067G
<i>383-440 Big Block</i>						Jet Hot Code	JH-001
Prim. Pipe	Sec. Pipe	Outlet	Manual	Auto	Oxy Sensor		
1 7/8"		3 1/2" Flanged	N/A	N/A	N/A		
<ul style="list-style-type: none"> • Also available in polished Stainless Steel 						CH-48SS	
Note: May also fit Dodge Phoenix - 1965-1966							

Chrysler						Part No.	CH-107SS*
						Gasket	
<i>HEMI 354-392-426</i>							
Prim. Pipe	Sec. Pipe	Outlet	Manual	Auto	Oxy Sensor		
2"		3 1/2" Flanged	N/A	N/A	N/A		
<ul style="list-style-type: none"> • Polished Stainless Steel 							

Chrysler						Part No.	CH-108*
						Gasket	
<i>5.6Ltr (345C.I.) Hemi</i>						Jet Hot Code	JH-001
Prim. Pipe	Sec. Pipe	Outlet	Manual	Auto	Oxy Sensor		
1 3/4"		3" 2 Bolt Flanged	N/A	N/A	Yes		
Suit Hot Rod - Kit Cars and Engine Conversions							

Toyota						Part No.	CH-85*
						Gasket	CAE-095G
<i>Toyota/Lexus V8</i>						Jet Hot Code	JH-001
Prim. Pipe	Sec. Pipe	Outlet	Manual	Auto	Oxy Sensor		
1 5/8 "		3 " Flanged	N/A	N/A	N/A		
<ul style="list-style-type: none"> • Suits Toyota 4-Runner With IFS Suspension 							

*Denotes item is Mandrel Bent



Boat Headers

Chev	Part No.	CH-90*
	Gasket	CAE-011G
	Jet Hot Code	JH-003

Big Block

4-into-1 design

Prim. Pipe	Sec. Pipe	Outlet	Manual	Auto	Oxy Sensor
2"*		4"	N/A	N/A	N/A

- Features over transit
- Also available with 2 1/4" primaries
- Can be supplied with "Merge" style collectors - P.O.A.

Chev	Part No.	CH-90A*
	Gasket	CAE-010G
	Jet Hot Code	JH-003

Small Block

4-into-1 design

Prim. Pipe	Sec. Pipe	Outlet	Manual	Auto	Oxy Sensor
2"*		3-1/2"	N/A	N/A	N/A

- Features over transit
- Dual Adaptor plates.

Note: These pipes are also available in 1-7/8 " Primaries.

- Can be supplied with "Merge" style collectors - P.O.A.

Part No.	CH-90C
Part No.	CH-Merg-8
Jet Hot Code	JH-003

Chev	Part No.	CH-90B*
	Gasket	CAE-010G
	Jet Hot Code	JH-003

Small Block

4-into-1 design

Prim. Pipe	Sec. Pipe	Outlet	Manual	Auto	Oxy Sensor
1-3/4 "		3 "	N/A	N/A	N/A

- Features over transit
- Can be supplied with "Merge" style collectors - P.O.A.

Part No.	CH-Merg-8
Jet Hot Code	JH-003

*Denotes item is Mandrel Bent



Sprint Car

Chev	Part No.	CH-110-2"*				
	Gasket	CAE-010G				
	Jet Hot Code	JH-003				
<i>Small block with 23 degree heads</i>	Prim. Pipe	Sec. Pipe	Outlet	Manual	Auto	Oxy Sensor
	2 "		3.5 "	N/A	N/A	N/A
<i>4-into-1 design</i>						

- Can be supplied in Stepped Design. e.g. 1-7/8 " to 2 ", 1-3/4 " to 1-7/8 "
- Also available with Merge Style Collectors P.O.A.

Chev	Part No.	CH-110-1 7/8*				
	Gasket	CAE-010G				
	Jet Hot Code	JH-003				
<i>Small block 4-into-1 design</i>	Prim. Pipe	Sec. Pipe	Outlet	Manual	Auto	
	1 7/8"		3.5 "	N/A	N/A	
	Jet Hot Code	Option:				
	Part No.	CH-Merg-8				
	Jet Hot Code	JH-003				

Chev	Part No.	CH-110A*				
	Gasket	CAE-010G				
	Jet Hot Code	JH-003				
<i>Small block with 23 degree heads</i>	Prim. Pipe	Sec. Pipe	Outlet	Manual	Auto	
	1-3/4 "		3 "	N/A	N/A	
<i>4-into-1 design</i>	Jet Hot Code	Option:				
		CH-Merg-1				
	Jet Hot Code	JH-003				

- Also available with Merge Style Collectors P.O.A.

Ford V8 Windsor	Part No.	CH-110B *				
	Gasket	CAE-016G				
	Jet Hot Code	JH-003				
	Prim. Pipe	Sec. Pipe	Outlet	Manual	Auto	
	1-3/4 "		3 "	N/A	N/A	

- Supplied with Dual Adapter Plates
- Also available with Merge Style Collectors P.O.A.

Chev	Part No.	CH-110C*				
	Gasket	CAE-010G				
	Jet Hot Code	JH-003				
<i>Small block with 23 degree heads</i>	Prim. Pipe	Sec. Pipe	Outlet	Manual	Auto	
	1-7/8 "	Stepped 2"	3-1/2 "	N/A	N/A	
<i>4-into-1 design</i>	Jet Hot Code	Option:				
		CH-Merg-3				
	Jet Hot Code	JH-003				

- Also available with Merge Style Collectors P.O.A.

*Denotes item is Mandrel Bent



Sprint Car

Chev

Small block
with 23 degree heads

4-into-1 design

Prim. Pipe	Sec. Pipe	Outlet	Manual	Auto
1-3/4 "	Stepped 1-7/8"	3-1/2 "	N/A	N/A

• Also available with Merge Style Collectors P.O.A.

Part No.	CH-110D*
Gasket	CAE-010G
Jet Hot Code	JH-003
	Option:
	CH-Merg-3
Jet Hot Code	JH-003

Holden V6

VN, VP, VR

3-into 1 Design

Prim. Pipe	Sec. Pipe	Outlet	Manual	Auto	Oxy Sensor
1-5/8 "		3 "	N/A	N/A	N/A

Also Available in 1-1/2 " Primaries

Part No.	CH-113*
Gasket	HTG-021
Jet Hot Code	JH-003

Part No.	CH-113A*
Jet Hot Code	JH-003

Chev LS1, LS2 & LS3

5.7L, 6.0L & 6.2L

4-into-1 design

Prim. Pipe	Sec. Pipe	Outlet	Manual	Auto
1-3/4 "	Stepped 1-7/8"	3-1/2 "	N/A	N/A

• Also available with Merge Style Collectors P.O.A.

Part No.	CH-110LS*
Gasket	HTG548
Jet Hot Code	JH-003
	Option:
	CH-Merg-3
Jet Hot Code	JH-003

Chev LS1, LS2 & LS3

5.7L, 6.0L & 6.2L

4-into-1 design

Prim. Pipe	Sec. Pipe	Outlet	Manual	Auto
2"		4"	N/A	N/A

• Also available with Merge Style Collectors P.O.A.

Part No.	CH-110LSx2"*
Gasket	HTG548
Jet Hot Code	JH-003
	Option:
	CH-Merg-3
Jet Hot Code	JH-003

*Denotes item is Mandrel Bent



Header plates & Flanges

All plates laser cut from 10mm Mild or Stainless Steel unless noted

Chev	Port Size	Part No.	
Small Block Chev	1 3/4 "	HP-SB/1	
Small Block Chev	1 5/8"	HP-SB/1 5/8	
Small Block Chev Stainless Steel	1 5/8"	HP-SB/1SS	
Small Block Chev adaptor plates	1 3/4"	HP-SB 1 3/4	
Small Block Chev adaptor plates	1 7/8"	HP-SB 1 7/8	
Small Block Chev adaptor plates	2"	HP-SB1-2"	
Small Block Nascar Heads	2" Or	1 3/4" HP-SB2x2"	HP-SB2x1-3/4"
Small Block Chev D-port GEN II	1 5/8"	HP-SB/3	
5.7i GEN III & 6i LS-2	1 5/8"	HP-LS 1 5/8	
5.7i GEN III & 6i LS-2	1 3/4"	HP-LS 1 3/4	
5.7i GEN III & 6i LS-2	1 7/8"	HP-LS 1 7/8	
5.7i GEN III & 6i LS-2	1 3/4"	HP-LS-8mm x 1 3/4"	
5.7i GEN III & 6i LS-2	2"	HP-LS 2	
Chev SB 18 ° heads and Racer Pro	1 3/4"	HP-SB/4A	
Chev SB 18 ° heads and Racer Pro	1 7/8"	HP-SB/4	
Chev SB Brodix heads	1 7/8"	HP-SB/BRO	
Chev SB Pro Topline Alum. Heads	1 7/8"	HP-SB Pro	
Racer Pro heads. Spread ports	2"	HP-RP/1	
V6 Chev	1 5/8"	HP-V6/1	
V8 6ltr Diesel Chev	1 5/8"	HP-V8/1	
Big Block Chev	1 3/4"	HP-BB/4	
Big Block Chev Square port	2"	HP-BB/9	
Big Block Chev	2"	HP-BB/1	
Big Block Chev Stainless Steel	2"	HP-BB/1SS	
Big Block Chev	2 1/4"	HP-BB/2	
Big Block Chev Stainless Steel	2 1/4"	HP-BB/2 SS	
Big Block 409 Chev	2"	HP-BB/3	
Big Block Dart#2	2-1/2"	HP-BB/5	
Big Block Dart#2	2-3/8"	HP-BB6	
Big Block with GM-Pro-Stock Heads	2-1/8"	HP-BB/7-SS	
Big Block with GM-Pro-Stock Heads	2-1/4"	HP-BB/8-SS	
Holden	Port Size	Part No.	
253-308 V8	1 5/8"	HP-H8	
253-308 V8	1 7/8 "	HP-H8A	
5ltr EFI V8	1 5/8"	HP-H VN8	
5ltr EFI V8	1 3/4" Or	1 7/8" HP-H VN8 1 3/4	HP-H VN8-1-7/8"
6cyl Red motor (12mm)	1 5/8"	HP-H6R	
6cyl Blue & Black motor (12mm)	1 5/8"	HP-H6B	
RB30 VL Commodore 6cyl	1 5/8"	HP-H1	
VN-VP-VR 6cyl non-EcoTec	1 5/8"	HP-HVN6	
VS onwards 6cyl EcoTec	1 5/8"	HP-HV6ECO-1-5/8"	HP-HV6ECO-1-3/4"

*Denotes item is Mandrel Bent



Header plates & Flanges

All plates laser cut from 10mm Mild or Stainless Steel unless noted

Holden (continued)	Port Size	Part No.	
Alloytech V6	1 5/8"	HP-HAV6	
Gemini / Rodeo 4 cyl	1 5/8"	HP-HGEM	
6cyl Grey Motor	1 1/2"	HP-GREY	
Ford	Port Size	Part No.	
4cyl 1600. Siamese ports	1 1/2"	HP-F14	
4cyl 2l Escort	1 1/2"	HP-F10	
6cyl BA-BF Falcon 4.0l	1 5/8"	HP-F9	
6cyl EA-AU Falcon	1 5/8"	HP-F8	
6cyl Falcon cast iron & alloy cross-flow	1 5/8"	HP-F5	
6cyl 170-220-250 conventional	1 5/8"	HP-F6	
AFR - Dart II Roush heads	1-5/8"	HP-F4 *	* indicates all FORD Windsor AFR/DART II Roush Heads with 76mm (3") Bolt Spacing
AFR - Dart II Roush heads	1-3/4 "	HP-F4A*	
AFR - Dart II Roush heads	1-7/8 "	HP-F4B*	
AFR - Dart II Roush heads	2"	HP-F4C*	
AFR - Dart II Roush heads	1-3/4"	HP-F4A S/S*	
AFR - Dart II Roush heads	1-7/8"	HP-F4B S/S*	
AFR - Dart II Roush heads	2"	HP-F4C S/S*	
Windsor V8	1 5/8"	HP-FW/1	
Windsor V8 adaptor plates	1 3/4"	HP-FW/3	
Windsor V8 adaptor plates	1 7/8"	HP-FW/4	
Windsor V8 adaptor plates	2"	HP-FW/2	
Windsor V8 Edelbrock Glidden heads	1 7/8"	HP-F15	
Windsor V8 Victor Junior	2"	HP-F16	
Cleveland V8. 4V heads	1 3/4"	HP-FC/2	
Cleveland V8. 4V heads	1 7/8"	HP-FC/2	
Cleveland V8. 4V heads	2"	HP-FC/3	S/Steel HP-FC/3-S/S
Cleveland V8. 2V heads	1 3/4"	HP-FC/1	
FE 390-427 Big Block	1 7/8"	HP-F7	
429-460 Big Block	1 7/8"	HP-F1	
429-460 Big Block with Hi Port Heads	1 7/8 "	HP-F1 Hi Port	
V8 Sidevalve	1 5/8"	HP-F2	
272 Y-block	1 3/4"	HP-F3	
4.6l USA V8 engine	1 3/4"	HP-F11	
5.4l BA Falcon V8 quad cam	1 3/4"	HP-F12	
Cleveland Yates heads.	1 7/8"	HP-F13	
Cleveland Yates heads.	2"	HP-F13A	
Coyote 5.0Lt V8	1 3/4"	HP-F17	
Coyote 5.0Lt V8	1 3/4"	HP-F17 S/S	
Coyote 5.0Lt V8	1 7/8"	HP-F17A	

*Denotes item is Mandrel Bent



Header plates & Flanges

All plates laser cut from 10mm Mild or Stainless Steel unless noted

Chrysler	Port Size	Part No.
273-318-360 Small Block	1 5/8"	HP-C1
383-440 Small Block	1 7/8"	HP-C2
426 HEMI-inc Indy Heads	2"	HP-C3-2"
426 HEMI-inc Indy Heads	2-1/4 "	HP-C3-2.25"
Keith Black HEMI stage II	2"	HP-C4
Slant 6	1 5/8"	HP-C5
HEMI 6	1 5/8"	HP-C6
331-354-392 HEMI	1 3/4"	HP-C7
331-354-392 HEMI	1 3/4"	HP-C7SS 304 Stainless Steel
331-354-392 HEMI	1 7/8"	HP-C7
331-354-392 HEMI	2"	HP-C7
313-318 Canadian Ploy engine	1 3/4"	HP-C8
345-5.7Lt Hemi	1 3/4"	HP-C9
Mopar 4cy W9 Heads		HP-C10
Toyota	Port Size	Part No.
Toyota/Lexus V8	1 3/4"	HP-LEXUS V8
Toyota / Lexus V8 S/Steel	1 3/4"	HP-LEXUS V8 S/S
Toyota / 1JZ GTE	30mm	HP-1JZ GTE
Isuzu	Port Size	Part No.
Isuzu 3.5l V6	1 5/8"	HP-ISU V6
Isuzu Rodeo / Gemini 4cyl	1 5/8"	HP-HGEM
Buick	Port Size	Part No.
Buick Chev plates.	2" or 2 1/8"	HP-BC/1
Buick V6	1 5/8"	HP-B1
Buick V8 430B/B	1 7/8 "	HP-B2
Nissan/Datsun	Port Size	Part No.
Datsun 1600-2000	1 5/8"	HP-N1
4.2l Patrol/Maverick	1 5/8"	HP-N2
VQ35-V6	1 3/4"	HP-N3 and Stainless/Steel HP-N3 S/S
Oldsmobile 303 V8	1 3/4"	HP-01
Oldsmobile 1956 324 V8	1 3/4"	HP-02
CADILLAC		
V8 Big/Block	1 3/4"	HP-CADV8
Honda S2000		
	1-7/8 -2"	HP-HON/SS

Turbo Flanges

International Truck	Port Size	Part No.
345-392 V8 Truck		HP-INTV8
6CYL - 240-260-261		HP-INT6CYL

*Denotes item is Mandrel Bent



Collectors

3 Bolt Flanges	Port Size	Part No.	
6mm thick	1 5/8"	COLL-PL301	
	1 3/4"	COLL-PL302	
	2"	COLL-PL303	
	2 1/4"	COLL-PL304	
	2 1/2"	COLL-PL305	
	3"	COLL-PL306	
	3 1/2"	COLL-PL307	
	4"	COLL-PL308	

2 Bolt Flanges	Port Size	Part No.	
10mm thick	2"	COLL-PL201	
	2 1/4"	COLL-PL202	
	2 1/2"	COLL-PL203	
	3"	COLL-PL204	

2 into 1	Inlet	Outlet	Part No.
	1 5/8"	1 3/4"	COLL-21
	1 3/4"	2"	COLL-22
	2"	2 1/4"	COLL-23
	2"	2 1/2"	COLL-20

3 into 1	Inlet	Outlet	Part No.
	1 1/2"	2 1/2"	COLL-30
	1 5/8"	1 3/4"	COLL-31
	1 5/8"	2 1/2"	COLL-32
	1 3/4"	2 1/2"	COLL-33

4 into 1	Inlet	Outlet	Part No.
	1 5/8"	3"	COLL-41
<i>Inline Collector</i>	1 5/8"	2 1/2"	COLL-48
	1 3/4"	3"	COLL-42
	1 7/8"	3 1/2"	COLL-43
	2"	3 1/2"	COLL-44
	2"	4"	COLL-45
	2 1/8"	3 1/2"	COLL-46
	2 1/4"	4"	COLL-47
<i>Slip-fit (can be supplied with spheres)</i>	1 7/8"	3 1/2"	COLL-SLIP41
<i>Slip-fit (can be supplied with spheres)</i>	2"	3 1/2"	COLL-SLIP42
<i>Slip-fit (can be supplied with spheres)</i>	2"	4"	COLL-SLIP43
<i>Slip-fit (can be supplied with spheres)</i>	2 1/4"	4"	COLL-SLIP44

*Denotes item is Mandrel Bent



Collectors

<i>Reducer Cones (with 3 bolt flange)</i>	Inlet	Outlet	Part No.
	2 1/2"	2"	COLL-RED01
	3"	2"	COLL-RED02
	2 1/2"	2 1/8"	COLL-RED03
	3"	2 1/2"	COLL-RED04
	3 1/2"	2 1/2"	COLL-RED05
	4"	3"	COLL-RED06
	3"	2 1/4"	COLL-RED07
<i>2 bolt flange</i>	3"	2 1/4"	COLL-RED08
<i>Hot Rod style exhaust cones. Customer to supply specifications (length, inlet, outlet)</i>			COLL-CONE

MERG COLLECTORS



Type	Inlet	Outlet	Part No.
4 into 1	1 3/4"	3"	CH-MERG-1
2 into 1	1 7/8"	3"	CH-MERG-2
4 into 1	1 7/8"	3 1/2"	CH-MERG-3
4 into 1 Stainless only	2 1/4"	4"	CH-MERG-4
4 into 1	2 1/8"	3 1/2"	CH-MERG-5
2 into 1	2"	2 1/4"	CH-MERG-6
2 into 1	2 1/4"	3"	CH-MERG-7
4 into 1	2"	3"	CH-MERG-8
4 into 1	1 7/8"	3"	CH-MERG-9
4 into 1	1 5/8"	2 1/2"	CH-MERG-12
4 into 1 Stainless Steel	2 1/2"	5"	CH-MERG-13

*Denotes item is Mandrel Bent



Engine Mounts

Holden HQ-HJ-HZ-HX-WB	Part No.	CH-EM34KIT
fitted with: 3.8l V6 Ecotec & Non Ecotec	<ul style="list-style-type: none"> Suit vehicles with A/C. For non-A/C use CH-EM60 Requires A1156 rubbers Must use with Sump 04C 	
Holden Gemini	Part No.	CH-EM64
fitted with: 3.8l V6 non-EcoTec & EcoTec	<ul style="list-style-type: none"> Includes rubbers 	
Holden FJ-EH-HD-HR-HK-HT-HG	Part No.	CH-EM60
and Torana LC-LJ-LH-LX-UC	<ul style="list-style-type: none"> Includes rubbers -- A1156. 	
fitted with: 3.8l V6 non-EcoTec & EcoTec	<ul style="list-style-type: none"> Must use with Sump 04A - V6 Ecotec Must use with Sump 04B - V6 Non Ecotec 	
Holden HQ-HJ-HZ-HX-WB & HK-HT-HG	Part No.	CH-EM89
& Torana LC-LJ-LH-LX-UC	<ul style="list-style-type: none"> Engine Mount Brackets only - Requires A1135 rubbers for HK-HT-HG Engine Mount Brackets only - Requires A1157 rubbers for HQ-WB & all Torana's 	
fitted with: 253-308 & 5ltr EFI	Part No.	CH-EM89P/M
	<ul style="list-style-type: none"> Power Mount suits Holden HK-HT-HG HQ to WB & all Torana's 	
Holden EJ-EH-HQ-HJ-HZ-HX-WB & HK-HT-HG	Part No.	CH-EM69
fitted with: 5.7L GEN III To LSA Engines	<ul style="list-style-type: none"> Engine Mount Brackets Includes rubbers 	
	Part No.	CH-EM69P/M
	<ul style="list-style-type: none"> Power Mount suits Holden HK-HT-HG HQ to WB & all Torana's NOTE: May not fit some aftermarket engine blocks 	
Holden Torana LC-LJ-LH-LX-UC	Part No.	CH-EM70
fitted with: 5.7L GEN III To LSA Engines	<ul style="list-style-type: none"> Engine Mount Brackets Includes rubbers 	
Holden Commodore VB-VS	Part No.	CH-EM80A
fitted with: 5.7L GEN III To LSA Engines	<ul style="list-style-type: none"> Engine Mount Brackets Includes rubbers Both of these engine mounts can only be used with V8 K-frame NOTE: May not fit some aftermarket engine blocks 	
Power Mount suit 5.7L GEN III, 6.0L GEN IV, 6.2L LS3 & LSA		CH-EM80-P/M
Holden Commodore VL- RB30 6cyl	Part No.	CH-EM80-VL6P/M
	<ul style="list-style-type: none"> Power Mount suit Commodore VL RB30 6cyl K-Frame with LS1-2-3 Conversion If using VN-VS-V6 K-Frame use 	
	Part No.	CH-EM80-V6
Power Mount	Part No.	3-1108G
	<ul style="list-style-type: none"> Replaces A1115 Engine mount rubbers 	

NOTE:

- Power Mount products are designed to suit original V6 and V8 engine blocks and therefore may not suit aftermarket engine blocks.

*Denotes item is Mandrel Bent



Engine Mounts

Holden Part No. **CH-EM02**

HQ-HJ-HZ-HX-WB

- Engine Mount Brackets only - Requires A1157 rubbers

Torana LH-LX-UC

- Suits Commodore VB-VS

fitted with: Small Block & Big Block Chev

Power Mount suit Small Block & Big Block Chev Part No. **CH-EM02P/M**

Holden Part No. **CH-EM31**

HK-HT-HG

- Requires A1128 Rubbers

Torana LC-LJ

- Thick mount goes on drivers side

fitted with:

Small Block & Big Block Chev

Power Mount suit Small Block & Big Block Chev Part No. **CH-EM31P/M**

Holden Part No. **CH-EM66**

Torana LC-LJ-LH-LX-UC

fitted with:

Nissan RB30 6cyl

Holden Part No. **CH-EM67**

FJ-EH

fitted with:

Nissan RB30 6cyl

Holden Part No. **CAE-359**

253-308

Transmission Adaptor Plate

suit early Holden 253-308 block to GM Turbo Bolt Pattern

Chev Part No. **CH-EM36 B/B**

1955-56-57

Part No. **CH-EM36 S/B**

fitted with:

Small Block & Big Block Chev

Note: may not suit some Rack and Pinion Conversion Kits.

Chev Part No. **CH-EM83-BASE**

1955-56-57

- Includes rubbers

CH-EM83-TOP

fitted with:

- Uses ChevS/B Style Rubber Mounts

5.7L GEN III & LS-2 & LS-3 Engines

- Note: Use SUMP-GEN111-4

Chev Truck C10- C20 Part No. **CH-EM91**

- Includes rubbers

Nissan 300ZX-Z30-Z31-Z32 Part No. **CH-EM92P/M**

- LS-1-2-3 Chev Engine Conversion (Power Mount Style)

fitted with:

- Fitted with 5.7L LS-1 LS-2 LS-3

*Denotes item is Mandrel Bent



Engine Mounts

Chev 1958-64-65-70	<ul style="list-style-type: none"> Fitted with 5.7L LS-1 LS-2 LS-3 LS-4 	Part No.	CH-EM03
fitted with:	<ul style="list-style-type: none"> Includes Engine Mount Base Plate and Rubbers 		
Ford Falcon XT-XR-XY-XW	<ul style="list-style-type: none"> Use With Engine Mount Rubbers: 	Part No.	CH-EM35/1
fitted with: 429-460 Big Block	Part No. A2367 & A2368		
Ford Falcon XA-XB-XC-XD-XE-XF	<ul style="list-style-type: none"> Use With Engine Mount Rubbers: 	Part No.	CH-EM35/2
fitted with: 429-460 Big Block	Part No. A2367 & A2368		
Ford Falcon XR-XT-XW-XY	<ul style="list-style-type: none"> Engine Mount Base 	Part No.	CH-EM06
fitted with: 289-302-351 Windsor Engine	<ul style="list-style-type: none"> Use with Engine mount rubbers A1140 	Power Mount	CH-EM06P/M
Ford Falcon XR-XT-XW-XY	<ul style="list-style-type: none"> Kit includes engine mounts brackets Suits Falcon BA-BF-FG rubber mounts 	Part No.	CH-EM07
fitted with: Falcon BA-BF-FG - BARRA 6cyl Engine	Option: Engine mount rubbers if required		
Ford Falcon XK-XL-XP-XM	<ul style="list-style-type: none"> Kit includes radiator mounts, tie bar, engine mount and gearbox x-member Will also suit EFI engine EA-AU 	Part No.	CH-EM08
fitted with: 289-302 & 351 Windsor		Rubber Mounts	A1140
Ford Falcon XA to XF	<ul style="list-style-type: none"> Suits Falcon BA-BF-FG rubber mounts Kit includes engine mount brackets 	Part No.	CH-EM09
fitted with: Falcon BA-BF-FG - BARRA 6cyl Engine	Option: Engine mount rubbers if required		
Ford Territory 5.4V8 Conversion	<ul style="list-style-type: none"> Suits 5.4Lt Boss 260 V8 BA-BF-FG engine Must use FG 5.4Lt Reversed sump and pickup. 	Part No.	CH-EM10
Ford Falcon XA-XB-XC-XD-XE-XF-XG Ute		Part No.	CH-EM19
fitted with: Cleveland & Windsor		Rubber Mount	A1140
Ford Cortina TC-TD	<ul style="list-style-type: none"> Engine mount kit includes Engine mounts, Trans cross member and Chassis tabs. 	Part No.	CH-EM17
fitted with: Windsor			
Toyota Hi-lux		Part No.	CH-EM75
fitted with: Holden 3.8l V6			

*Denotes item is Mandrel Bent



Engine Mounts

Ford XR-XT-XW-XY
Strut Strengthening Kit

Part No. **STRUTKIT01**

Engine Mount Rubbers

Rubbers	Part No.	Application
	A1128	Chev V8
	A1135	HG 308 V8
	A1156	6cyl Holden
	A1157	HQ 308 V8

*Denotes item is Mandrel Bent



V-Bands & Sealing Flanges

V-Bands clamps have been around for ages. They are used in a variety of commercial, industrial and racing applications. In many cases the end of a tube/pipe is pressed to form the flange. We have designed weld flanges that can be used to replace the old 2 bolt and 3 bolt flange slip joint and clamp connections. The precision CNC machined surface provides a gasketless seal.

The T-Bolt style latch allows the clamp to be installed quickly without removing the nut

V - Band & Flange Part Numbers

Tube size / O.D.	V - Band Kit	V - Band Clamp
2"	CH-VBC2"	
2.25"	CH-VBC2.25"	
2.50"	CH-VBC2.5"	
3.00"	CH-VBC3"	2500
3.50"	CH-VBC3.5"	2503
4.00 "	CH-VBC4"	2504
5.00"	CH-VBC5"	2506

Kit includes:

1 x clamp

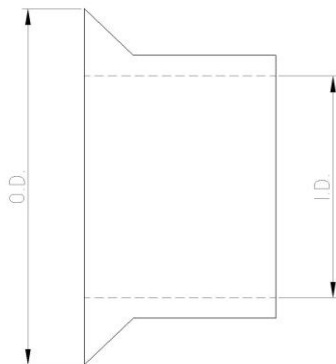
2 x sealing flanges

NOTE: All supplied in S/Steel

Specifications

V-Bands are designed for use with CAE Flanges. The advertised sizes refer to the outside diameter of the tube that will slide through the inside diameter of the sealing flange.

Our V-Band clamps and sealing flanges are not designed specifically to be compatible with other manufactures flanges, such as turbine outlets.



Part No.	I.D.	O.D.
CH-VBC2"	2.00"	2.69"
CH-VBC2.25"	2.25"	2.99"
CH-VBC2.5"	2.50"	3.22"
CH-VBC3"	3.00"	3.69"
CH-VBC3.5"	3.50"	4.22"
CH-VBC4"	4.00"	4.69"
CH-VBC5"	5.00"	5.59"

*Denotes item is Mandrel Bent



Mandrel Bends

Castle Headers offer Precision Mandrel Bends in Mild Steel and 304, 316, 409 in StainlessSteel. Radius = 1.5 x Diameter,

Tube Diameter		Deg Bend	Part No	Deg Bend	Part No	Deg Bend	Part No
Inches	MM	45Deg	CH-Bend	90Deg	CH-Bend	180Deg	CH-Bend
1-1/2"	38	"	00B	"	00A	"	00
1-5/8"	41	"	03C	"	03B	"	03A
1-3/4"	44	"	01C	"	01B	"	01A
1-7/8"	48	"	04C	"	04B	"	04A
2"	51	"	02C	"	02B	"	02A
2-1/8"	54	"	05C	"	05B	"	05A
2-1/4"	57	"	2054	"	2004	"	2144
2-3/8"	60.3	"	06C	"	06B	"	06A
2-1/2"	63.5	"	2055	"	2005	"	2145
2-3/4"	69.8	"	07C	"	07B	"	07A
3"	76	"	2056	"	2006	"	2146
3.5"	89	"	2057	"	2007	"	2147

Please Note - For Stainless Steel Pt No add SS. I.E. CH- Bend 03CSS

*Denotes item is Mandrel Bent



Transmission Cross Members

Part No.	Description
----------	-------------

CHEVROLET

XM5567TH700	Chevrolet 1955-56-57 with T-700 Auto Transmission
XM5567TH400	Chevrolet 1955-56-57 with T-400 Auto Transmission
XM5567TH350	Chevrolet 1955-56-57 with T-350 Auto Transmission
XM5567T56	Chevrolet 1955-56-57 with T56 Tremec Manual Transmission

HOLDEN - HK-HT-HG

XMHTGTH700	Holden HT-HG with T-700 Auto Transmission
XMHTGTH400	Holden HT-HG with T-400 Auto Transmission
XMHTGTH350	Holden HT-HG with T-350 Auto Transmission
XMHTGT56	Holden HT-HG with T56 Tremec Manual Transmission
XMHTLS14L60E	Holden HT-HG with 4L60E Tremec Manual Transmission
XMHKTH700	Holden HK with T-700 Auto Transmission
XMHKTH400	Holden HK with T-400 Auto Transmission
XMHKTH350	Holden HK with T-350 Auto Transmission

HOLDEN - HQ-HJ-HX-HZ-WB

XMHQUTETH700	HQ-HJ-HX-HZ-WB Ute -1 Tonner & Van with T-700 Auto Transmission
XMHQUTETH400	HQ-HJ-HX-HZ-WB Ute -1 Tonner & Van with T-400 Auto Transmission
XMHQUTETH350	HQ-HJ-HX-HZ-WB Ute -1 Tonner & Van with T-350 Auto or Muncie,Saginaw & Super T10 Man.Trans.
XMHQUTE4L60E	HQ-HJ-HX-HZ-WB Ute -1 Tonner & Van with 4L60E Auto Transmission
XMHQUTET56	HQ-HJ-HX-HZ-WB Ute -1 Tonner & Van with T56 Tremec Manual Transmission
XMHQSEDTH700	HQ-HJ-HX-HZ-WB Sedan with T-700 Auto Transmission or T5 Transmission
XMHQSEDTH400	HQ-HJ-HX-HZ-WB Sedan with T-400 Auto Transmission
XMHQSEDTH350	HQ-HJ-HX-HZ-WB Sedan with T-350 Auto Transmission
XMHQSEDT56	HQ-HJ-HX-HZ-WB Sedan with T56 Tremec Manual Transmission
XMHQSED4L60E	HQ-HJ-HX-HZ-WB Sedan with 4L60E Auto Transmission

FORD

XMFORDBA-XR-XT-XF	Suit Ford Falcon Extensions for Longer late model transmissions
XMFORDBA-BF-FG-T400	BA-BF-FG With T-400 Transmission
XMFORDBA-BF-FG-POWERGLIDE	BA-BF-FG With V8 Powerglide Transmission
XMFORDBA-BF-FG-6CYL-POWERGLIDE	BA-BF-FG With 6 Cylinder Powerglide Transmission

*Denotes item is Mandrel Bent



Transmission Cross Members

continued

Part No.	Description
----------	-------------

COMMODORE - * All Crossmembers Suit 253-308, 5LTR & LS Conversions*

XMVBKT5-T700	Holden VB-VK Commodore fitted with T5 manual and T700 Auto Transmission
XMVBKTH350	Holden VB-VK Commodore with T350 Auto Transmission
XMVBKTH400	Holden VB-VK Commodore with T-400 Auto Transmission
XMVBKP/GLIDE	Holden VB-VK Commodore with Powerglide Auto Transmission
XMVB-VKT56	Holden VB-VK Commodore with T56 Tremec Manual Transmission
XMVB-VK4L60E	Holden VB-VK Commodoreconversion with 4L60E and 4L65E Auto Transmission
XMVLVST5-T700	Holden VL Commodore with T5 Manual and T700 Auto Transmission
XMVLVSTH350	Holden VL-VS Commodore with Turbo 350 Auto Transmission
XMVLVSTH400	Holden VL-VS Commodore with Turbo 400 Auto Transmission
XMVLVSP/GLIDE	Holden VL-VR Commodore with Powerglide Auto Transmission
XMVLVST56	Holden VL-VS Commodore with T56 Tremec Manual Transmission
XMVLVS4L60E	Holden VL-VS Commodore with 4L60E and 4L65E Auto Transmission
XMVTVZT350	Holden VT-VZ Commodore with GEN III engine and T350 Auto. Trans.
XMVTVZT400	Holden VT-VZ Commodore with GEN III engine and T400 Auto. Trans.

TORANA

XMLH700 & T5	Holden LH Torana with T-700 Auto or T5 Transmission
XMLH400 & 4L60E	Holden LH Torana with T-400 Auto or 4L60E Transmission
XMLH350-P/Glide-Tri	Holden LH Torana with T-350 , Powerglide & Trimatic Auto Transmission
XMLCLS1T56	Holden LC-LJ Torana with T56 Transmission
XMLCJTH700	Holden LC-LJ Torana with T-700 Auto Transmission
XMLCJTH400	Holden LC-LJ Torana with T-400 Auto Transmission
XMLCJTH350	Holden LC-LJ Torana with T-350 Auto Transmission

NISSAN

XM-NISSAN 300XZ T350	Nissan 300 ZX-Z31-Z32 LS1-2-3 with T350 Auto Conversion rear cross member
XM-NISSAN 300XZ T56	Nissan 300 ZX-Z31-Z32 LS1-2-3 with T56 Manual Conversion rear cross member

*Denotes item is Mandrel Bent



ENGINE CONVERSION KITS

FORD

STRUTKIT-01	FORD FALCON XR-XT-XW-XY Strut strengthening kit
CH-EM08	FORD FALCON XK-XL-XP-XM V8 Windsor Conversion Kit.
CH-EM07	FORD FALCON XR-XT-XW-XY Kit to suit Ford BA-BF-FG 6cyl Barra and Turbo Engines.
CH-EM09	FALCON XA to XF to suit BA-BF-FG 6cyl Barra & Turbo Engines
CH-EM17	FORD CORTINA TC-TD FORD WINDSOR V8 Conversion Kit.
CH-EM19	FORD WINDSOR and CLEVELAND into XR-XT-XW-XY FALCONS.
XM-FORD-XL-XM-XP	FORD FALCON XK-XL-XM-XP Conversion Trans Cross member suit C4 Auto and Top Loader

*Denotes item is Mandrel Bent



*Denotes item is Mandrel Bent



*Denotes item is Mandrel Bent



*Denotes item is Mandrel Bent



*Denotes item is Mandrel Bent



*Denotes item is Mandrel Bent



*Denotes item is Mandrel Bent



*Denotes item is Mandrel Bent



*Denotes item is Mandrel Bent



*Denotes item is Mandrel Bent



*Denotes item is Mandrel Bent



*Denotes item is Mandrel Bent



*Denotes item is Mandrel Bent



*Denotes item is Mandrel Bent

